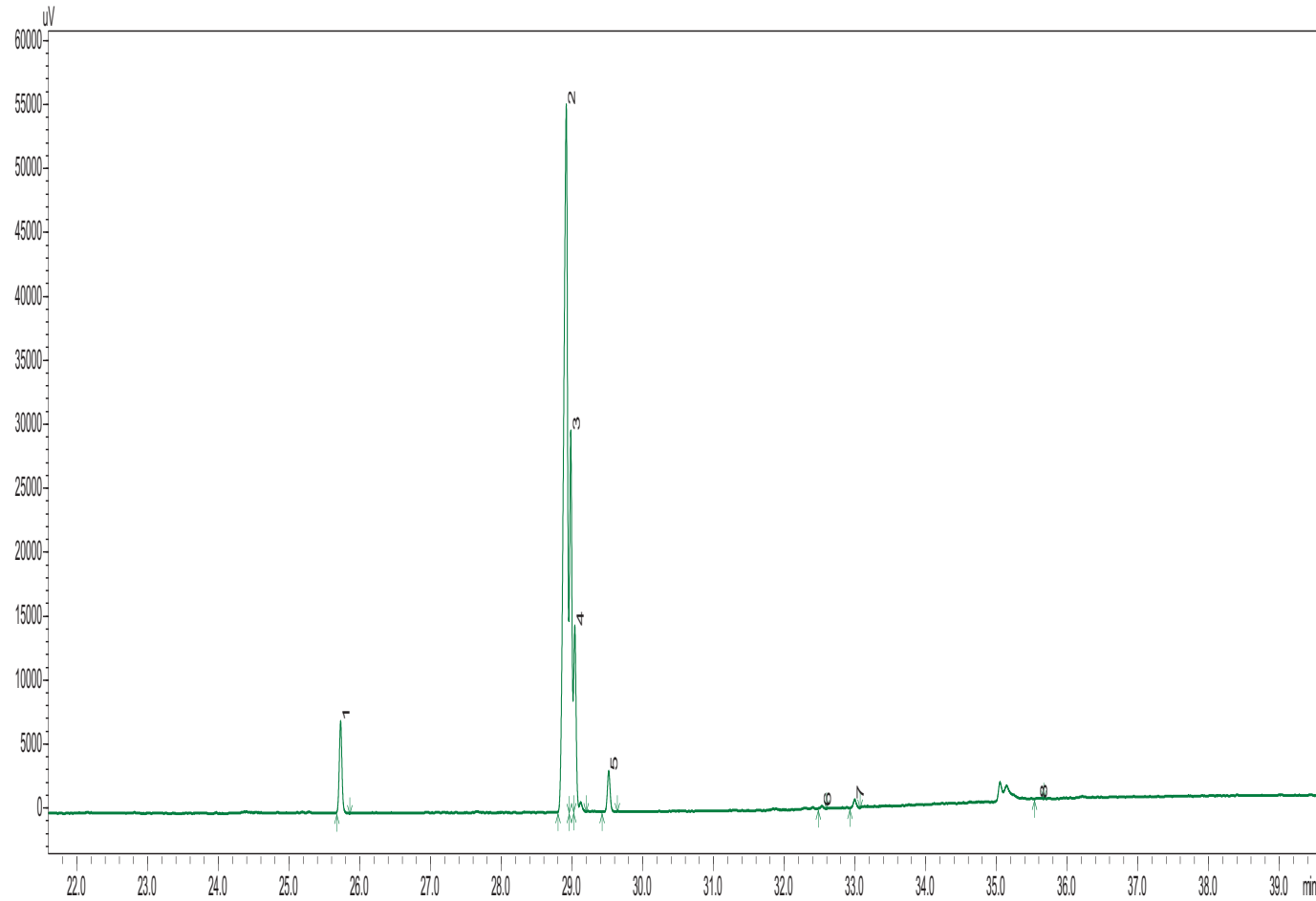


Rose Hip Seed Oil

Rosa Canina

Typical GC Profile



PEAK#	NAME	AREA%
1	PALMITIC ACID	5.38
2	LINOLEIC ACID	60.71
3	LINOLENIC ACID,	20.30
4	OLEIC ACID	10.34
5	STEARIC ACID	2.45
6	11-EICOSENOIC ACID, METHYL ESTER	0.15
7	ARACHIDIC ACID	0.56
8	BEHENIC ACID	0.12
Total		100.0

Notes
