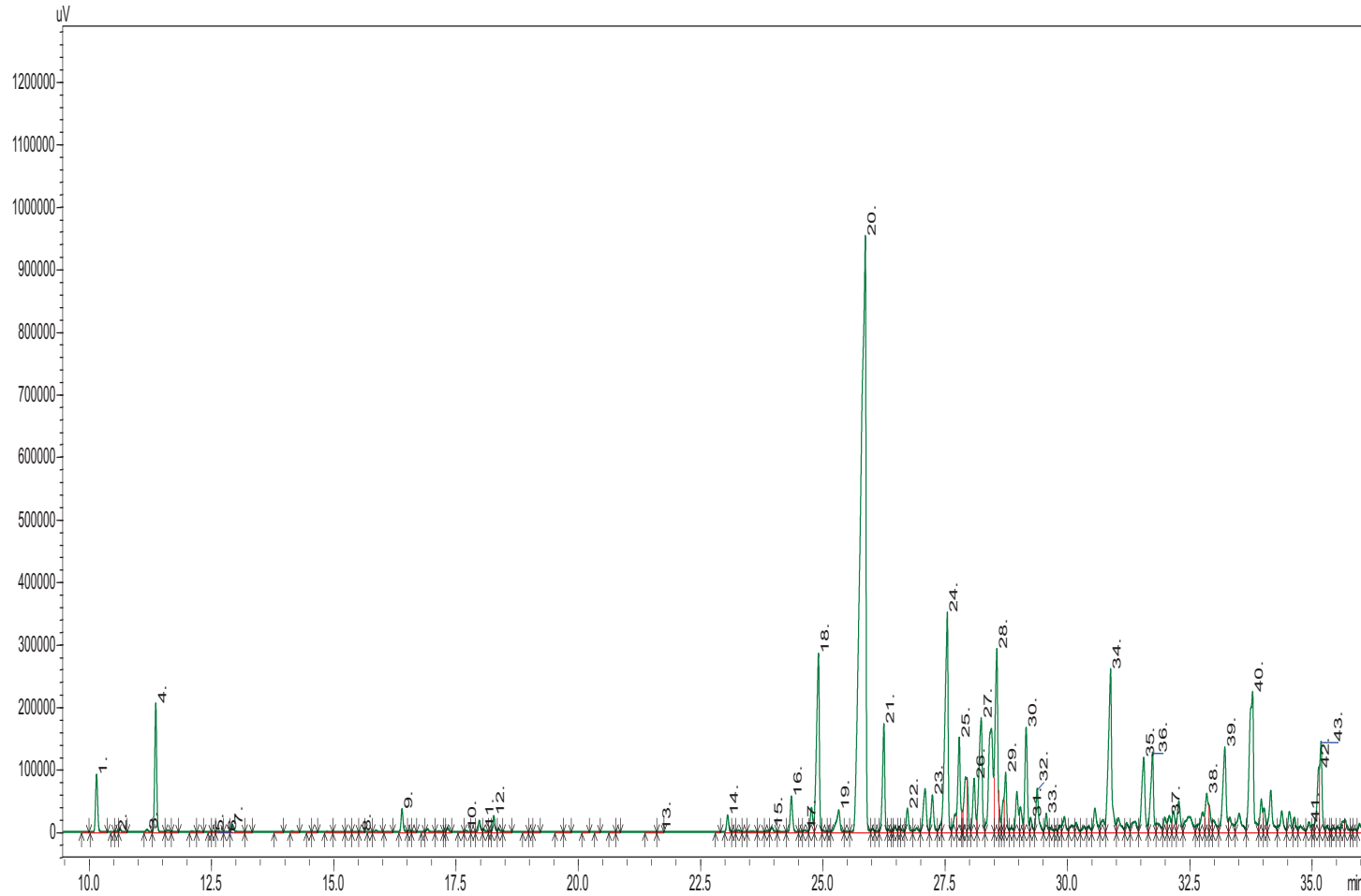


## Typical GC Profile



## Notes

Peak#	Name	Area%
1.	ALPHA-PINENE	0.93
2.	CAMPHENE	0.01
3.	SABINENE	0.04
4.	BETA-PINENE	1.96
5.	ALPHATERPINENE	0.01
6.	P-CYMENTHENE	0.02
7.	D-LIMONENE	0.14
8.	FENCHOL	0.01
9.	TRANS-PINOCARVEOL	0.36
10.	1-TERPINEN-4-OL	0.03
11.	ALPHA-TERPINEOL	0.06
12.	MYRTENOL	0.26
13.	MYRTENYL ACETATE	0.01
14.	CYPROTENE	0.27
15.	ALPHA-CUBEBENE	0.09
16.	2,4-PATCHOULADIENE	0.63
17.	CYCLOSATIVENE	0.04
18.	COPAENE	3.86
19.	BETA-ELEMENE	0.62
20.	CYPERENE	24.30
21.	CARYOPHYLLENE	1.87
22.	ALPHA-GUAIENE	0.43
23.	HUMULENE	0.73
24.	ROTUNDENE	5.27
25.	GAMMA-GURJUNENE	1.77
26.	GAMMA-SELINENE	1.03
27.	BETA-SELINENE	2.84
28.	ALPHA-SELINENE	3.74
29.	ALPHA-BULNESENE	1.05
30.	ALPHA-MAALIENE	1.96
31.	ALPHA-SELINENE	0.26
32.	CYPERENE EPOXIDE	0.89
33.	BETA-CALACORENE	0.32
34.	CARYOPHYLLENE OXIDE	4.18
35.	HUMULENE EPOXIDE II	1.89
36.	CYPEROTUNDONE	1.76
37.	EPICUBENOL	0.38
38.	GLOBULOL	0.84
39.	MUSTAKONE	2.20
40.	CYPERENONE	4.50
41.	GLOBULOL	0.23
42.	ISOVALENCENAL	1.05
43.	ALPHA CYPERONE	1.71