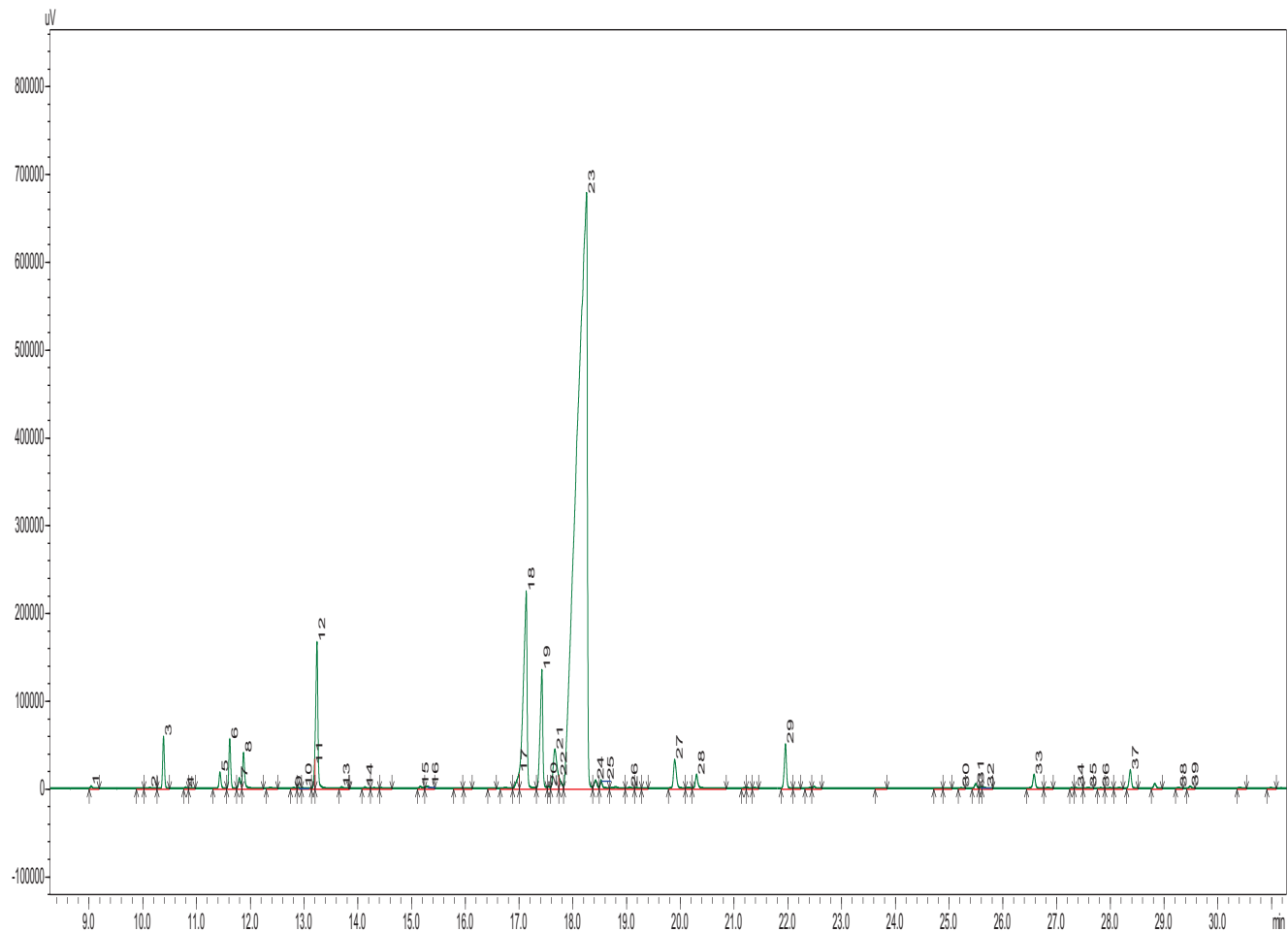


Mentha Arvensis Oil

Mentha Arvensis

Typical GC Profile



Notes

Peak#	Name	Area%
1	FURAN, 2,5-DIETHYLTETRAHYDRO-	0.05
2	ALPHA THUJENE	0.03
3	ALPHA-PINENE	1.06
4	CAMPHERE	0.02
5	SABINENE	0.37
6	BETA PINENE	1.06
7	3-OCTANOL	0.27
8	MYRCENE	0.90
9	ALPHA-TERPINEN	0.02
10	P-CYMENE	0.02
11	EUCALYTOL	0.22
12	LIMONENE	3.76
13	BETA-OCIMENE	0.04
14	GAMMA-TERPINENE	0.03
15	ALPHA- TERPINOLENE	0.07
16	LINALOOL	0.10
17	ISOPULEGOL	0.38
18	MENTHONE	8.49
19	ISOMENTHONE	3.62
20	MENTHOFURAN	0.05
21	NEOMENTHOL	1.68
22	NEOISOMENTHOL	0.33
23	MENTHOL	72.32
24	ISOMENTHOL	0.27
25	ALPHA-TERPINEOL	0.22
26	OCTYL ACETATE	0.04
27	PULEGONE	0.96
28	PIPERITONE	0.42
29	MENTHYL ACETATE	1.13
30	ALPHA-COPAENE	0.01
31	BETA-BOURBONENE	0.12
32	BETA ELEMENE	0.03
33	CARYOPHYLLENE	0.40
34	BETA-FAMESENE	0.01
35	HUMULENE ALPHA	0.02
36	GAMMA CADINENE	0.01
37	GERMACRENE D	0.48
38	BETA COPAENE	0.02
39	DELTA CADINENE	0.05