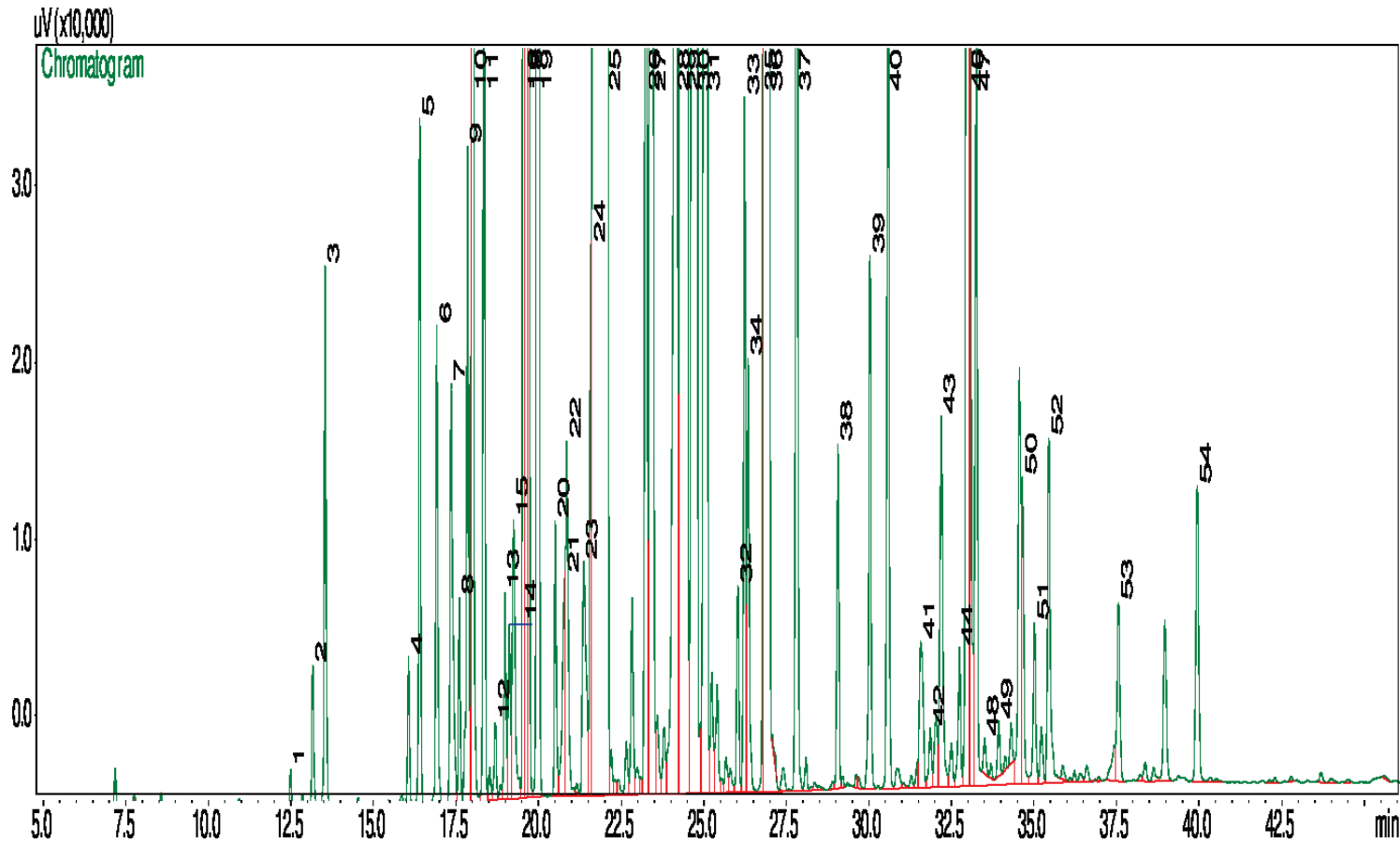


Lavender Oil Dalmatian

Lavandula Hybrida

Typical GC Profile



Peak#	Compound Name	Area%
1	METHYL HEXYL ETHER	0.01
2	CIS-3-HEXENOL	0.04
3	HEXANOL	0.17
4	ALPHA-THUJENE	0.0
5	ALPHA-PINENE	0.21
6	CAMPHENE	0.16
7	1-OCTENE-3-OL	0.20
8	SABINENE	0.06
9	BETA-PINENE	0.23
10	MYRCENE	0.76
11	HEXYL ACETATE	0.34
12	ALPHA-PHELLANDRENE	0.03
13	DELTA-3-CARENE	0.07
14	ALPHA-TERPINENE	0.07
15	PARA-CYME	0.14
16	LIMONENE	1.44
17	EUCALYPTOL	9.29
18	CIS-BETA-OCIMENE	2.05
19	TRANS-BETA-OCIMENE	1.90
20	GAMMA-TERPINENE	0.09
21	TRANS-SABINENE HYDRATE	0.10
22	CIS-LINALOOL OXIDE	0.16
23	TRANS-LINALOOL OXIDE	0.15
24	ALPHA-TERPINOLENE	0.16
25	LINALOOL	45.22
26	HEXYL BUTYRATE	0.74
27	CAMPHOR	2.26
28	LAVANDULOL	2.41
29	BORNEOL	6.61
30	TERPINEN-4-OL	5.93
31	ALPHA-TERPINEOL	2.34
32	NEROL	0.08
33	HEXYL-2-METHYL BUTYRATE	0.23
34	HEXYL-3-METHYL BUTYRATE	0.16
35	GERANIOL	0.08
36	LINALYL ACETATE	9.06
37	LAVANDULYL ACETATE	0.60
38	HEXYL TIGLATE	0.12
39	NERYL ACETATE	0.20
40	GERANYL ACETATE	0.35
41	ALPHA-COPAENE	0.09
42	BETA-BOURBONENE	0.03
43	COUMARIN	0.19
44	ALPHA-SANTALENE	0.06
45	BETA-CARYOPHYLLENE	3.17
46	TRANS-ALPHA-BERGAMOTENE	0.05
47	TRANS-BETA-FARNESENE	0.35
48	CIS-BETA-FARNESENE	0.02
49	ALPHA-HUMULENE	0.02
50	GERMACRENE D	0.12
51	BETA-BISABOLENE	0.07
52	GAMMA-CADINENE	0.17
53	CARYOPHYLLENE OXIDE	0.09
54	ALPHA-BISABOLOL	0.14

Notes
