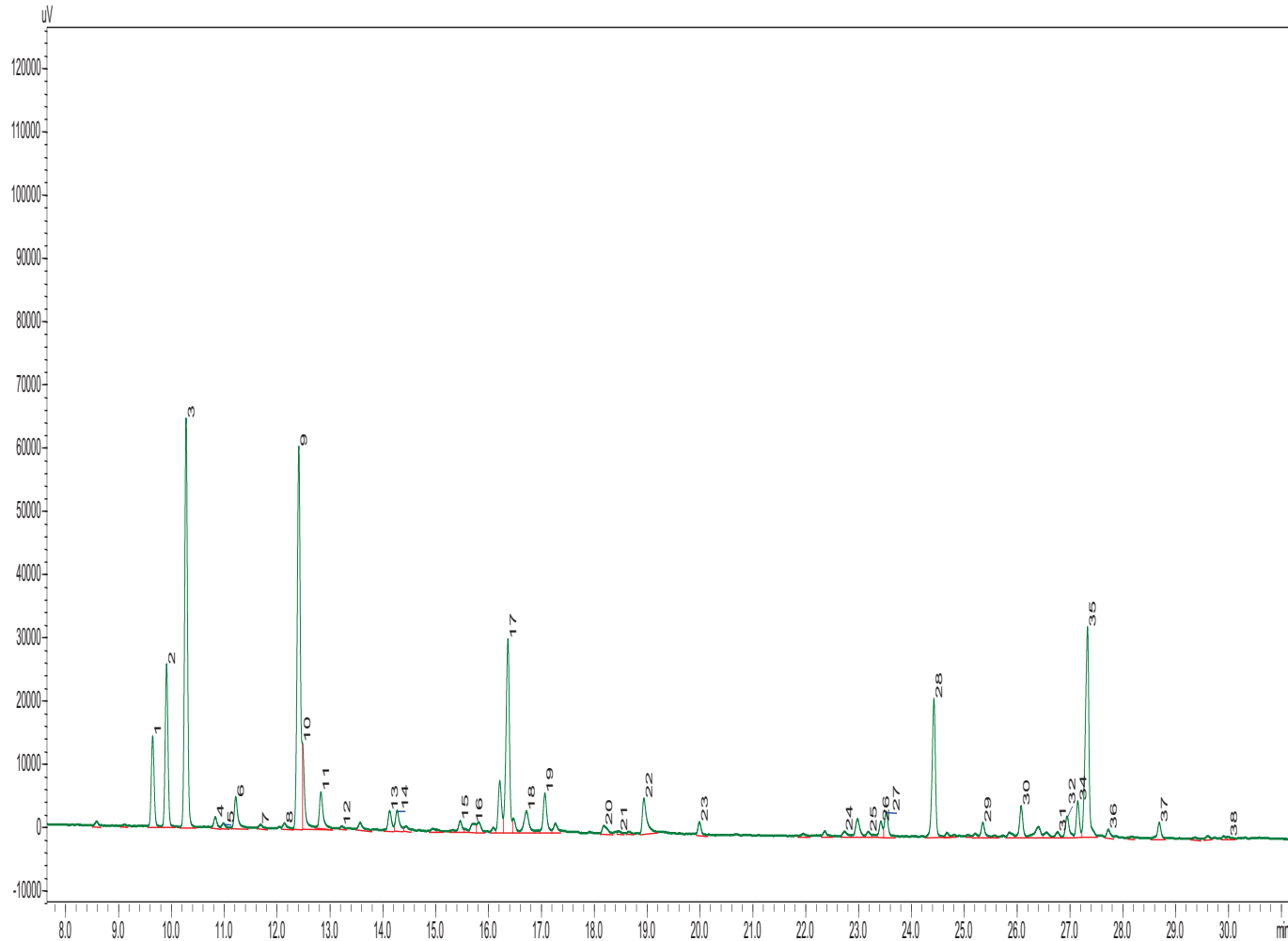


# Ginger Grass Oil

# *Cymbopogon Martini*

## Typical GC Profile



### Notes

PEAK#	NAME	AREA%
1	TRICYCLENE	3.44
2	ALPHA-PINENE	6.08
3	CAMPHENE	15.80
4	SABINENE	0.44
5	BETA-PINENE	0.17
6	BETA-MYRCENE	1.42
7	ALPHA-PHELLANDRENE	0.15
8	PARA -CYMENE	0.26
9	LIMONENE	16.3
10	TRANS-BETA-OCIMENE	2.65
11	CIS-BETA-OCIMENE	1.64
12	DELTA-3-CAREN	0.09
13	ALPHA-TERPINOLENE	0.88
14	LINALOOL	1.01
15	CAMPHOR	0.48
16	CITRONELLAL	0.53
17	BORNEOL	8.81
18	TERPENE-4-OL	1.35
19	ALPHA-TERPINEOL	1.86
20	CITRONELLOL	0.49
21	NERAL	0.09
22	GERANIOL	2.04
23	BORNYL ACETATE	0.53
24	NERYL ACETATE	0.29
25	ALPHA.-COPAENE	0.24
26	BETA.-BOURBONENE	0.64
27	BETA-ELEMENE	1.22
28	CARYOPHYLLENE	6.03
29	HUMULENE	0.65
30	GERMACRENE D	1.35
31	BETA BISABOLENE	0.23
32	GAMMA CADINENE	1.03
34	DELTA CADINENE	1.42
35	ELEMICIN	10.08
36	ELEMOLALPHA	0.34
37	CARYOPHYLLENE OXIDE	0.77
38	EPICUBENOL	0.11