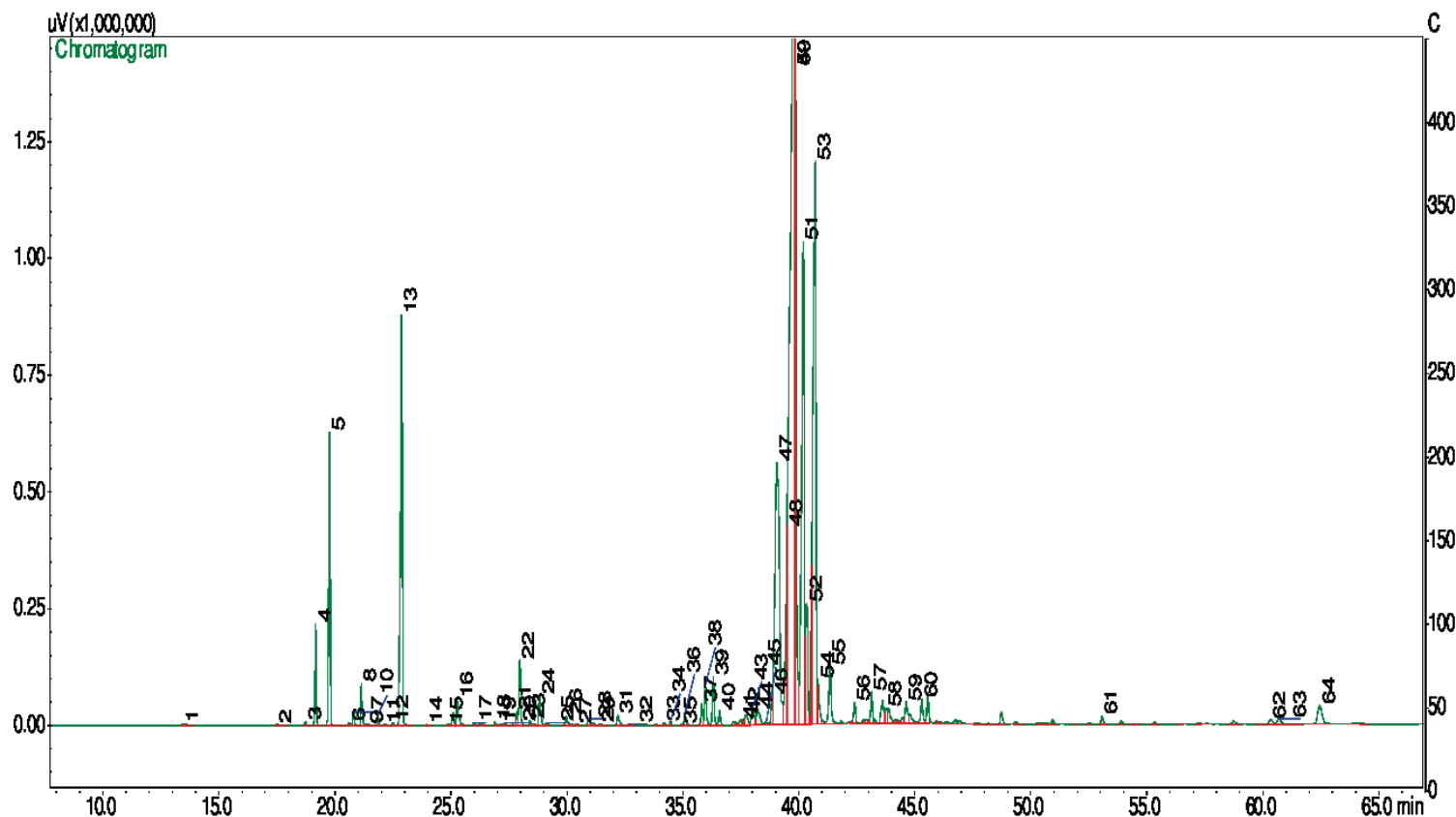


Typical GC Profile



Pea	Compound Name	Area%
	HEXANAL	0.0824
2	2-HEPTANOL	0.0334
3	TRICYCLEN	0.0444
4	PINENE <ALPHA>	0.9838
5	CAMPHE	3.4415
6	SABINENE	0.0607
7	PINENE <BETA>	0.1634
8	BETA-MYRCENE	0.4441
9	OCTANAL	0.0220
10	PHELLANDRENE <ALPHA	0.1210
11	CARENE <DELTA>	0.0149
12	CYMENE <PARA>	0.0417
13	TRANS SABINENE HYDRATE	5.9663
14	GAMMA-TERPINENE	0.0130
15	2-NONANONE / METHYL HEPTYL	0.0297
16	LINALOOL	0.4326
17	NONA-1,3,7-TRIE	0.0383
18	CAMPHOR	0.0456
19	CITRONELLAL	0.0282
20	CAMPHE HYDRATE	0.0524
21	ROSE FURAN OXIDE	0.1621
22	ENDO-BORNEOL	0.8476
23	TERPINEN-OL	0.0624
24	.ALPHA-.TERPINEOL	0.4278
25	DECANAL	0.0496
26	CITRONELLOL	0.1570
27	NERAL	0.0225
28	GERANIOL	0.1092
29	GERANIAL	0.0315
30	UNDECAN-ONE	0.1913
31	METHYL NONYL CARBINOL-/2	0.0317
32	CITRONELLYL ACETATE	0.0384
33	ELEMENE <DELTA>	0.0481
34	CUBEBENE <ALPHA>	0.0093
35	GERANYL ACETATE	0.1829
36	CYCLOSATIVENE	0.2880
37	COPAENE <ALPHA>	0.5983
38	ELEMENE <BETA>	0.6756
39	SESQUITHUENE <EPI>	0.2016
40	CARYOPHYLLENE <E>	0.0854
41	CIS-.ALPHA-.BERGAMOTENE	0.2092
42	(E)-.BETA-.FAMESENE	0.3860
43	SEQUIPELLANDRENE <BETA>	0.3979
44	HUMULENE <ALPHA>	0.0553
45	-9-EPI-.BETA-.CARYOPHYLLENE	0.2545
46	CURCUMENE <ALPHA	9.1306
47	GERMACRENE D	1.9143
48	ZINGIBERENE <ALPHA	31.3763
49	.ALPHA-.FARNESENE	6.2434
50	.BETA-.BISABOLENE	9.0780
51	CADINENE <GAMMA>	2.0553
52	SEQUIPELLANDRENE <BETA>	12.9574
53	(E)-.GAMMA-.BISABOLENE	0.6639
54	NEROLIDOL	1.0262
55	TRANS-SEQUIASABINENE HYDRAT	0.3198
56	ZINGIBERENOL	0.4332
57	EUDESOL <EPGAMMA>	0.2388
58	EUDESOL <BETA>	0.3996
59	ZINGIBERENOL	0.4120
60	GERANYL-CYMENE	0.1497
61	[6]-ISOSHOGAOL	0.1362
62	[6]-GINGERONE	0.1889
63	[6]-SHOGAOL	0.6136

Notes
