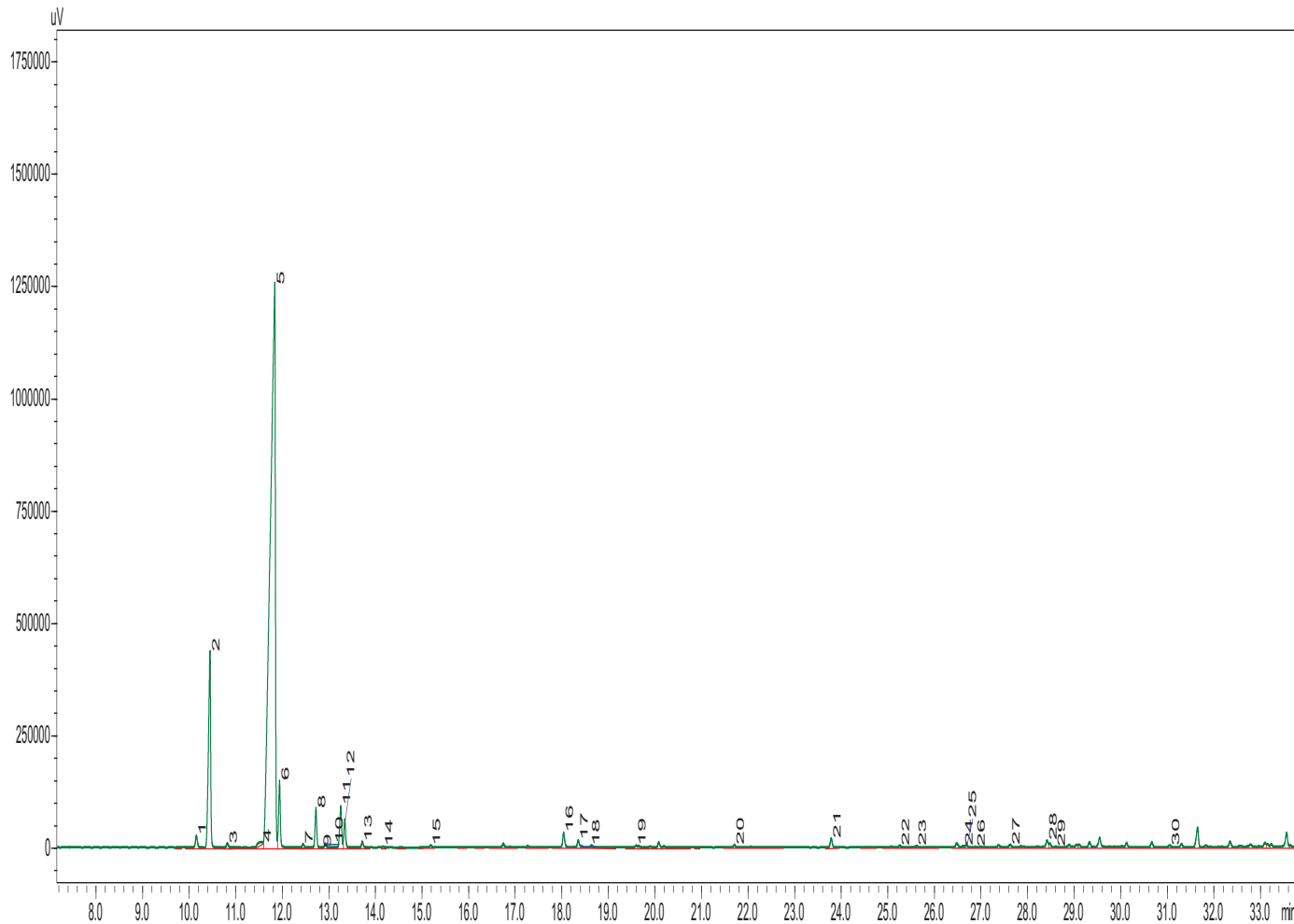


# Galbanum Oil

## *Ferula Galbaniflua*

### Typical GC Profile



PEAK#	NAME	AREA%
1	ALPHA-THUJENE	0.56
2	ALPHA PINENE	10.22
3	CAMPHENE	0.21
4	SABINENE	0.25
5	BETA-PINENE	66.33
6	MYRCENE	2.78
7	ALPHA-PHELLANDRENE	0.15
8	DELTA-3-CARENE	1.52
9	ALPHA-TERPIPENE	0.03
10	P- CYMENE	0.17
11	BETA-PHELLANDRENE	1.83
12	TRANS-ALPHA-OCIMENE	1.11
13	CIS-BETA-OCIMENE	0.26
14	GAMMA-TERPINENE	0.05
15	ALPHA- TERPINOLENE	0.10
16	(3E,5Z)-1,3,5-UNDECATRIENE	0.70
17	(3E,5E)-1,3,5-UNDECATRIENE	0.34
18	ALPHA-TERPINEOL	0.10
19	FENCHYL ACETATE	0.09
20	BORNYL ACETATE	0.12
21	ALPHA-TERPINYL ACETATE	0.43
22	ALPHA-COPAENE	0.10
23	BETA-ELEMENE	0.09
24	CARYOPHYLLENE	0.08
25	BETA-CEDREN	0.14
26	GAMMA-ELEMENE	0.04
27	ALPHA-HUMULENE	0.18
28	ALPHA-HIMACHALENE	0.41
29	BETA-SELINENE	0.06
30	GERMACREN D-4-OL	0.14

### Notes

-----

-----

-----