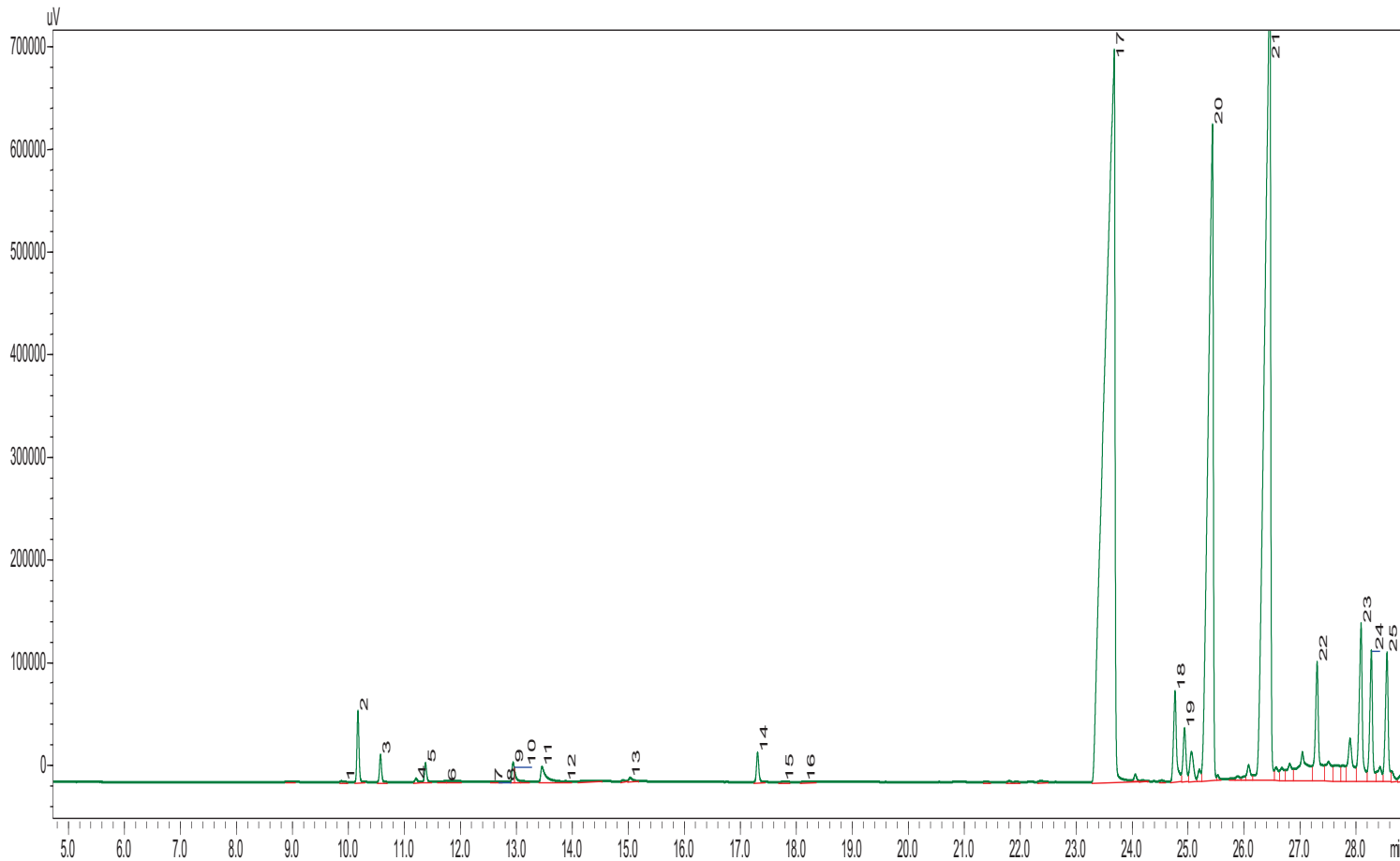


Holy Basil Oil

Ocimum Sanctum Exotica

Typical GC Profile



Peak#	Name	Area%
1	ALPHA-THUJENE	0.004
2	ALPHA-PINENE	0.708
3	CAMPHENE	0.274
4	SABINENE	0.041
5	BETA-PINEN	0.194
6	MYRCENE	0.010
7	ALPHA TERPINENE	0.002
8	P-CYMENE	0.002
9	EUCALYPTOL	0.186
10	D-LIMONENE	0.120
11	BETA-OCIMENE	0.376
12	GAMMA-TERPINENE	0.004
13	LINALOOL	0.061
14	BORNEOL,	0.336
15	TERPENE 4 OL	0.005
16	ALPHA TERPINEOL	0.010
17	EUGENOL	37.54
18	METHYLEUGENOL	1.343
19	COPAENE	0.761
20	BETA-ELEMENE	16.83
21	CARYOPHYLENE	24.52
22	HUMULENE	2.015
23	GERMACRENE D	2.493
24	BETA.-SELINENE	1.794
25	ALPHA-SELINENE	1.820

Notes
