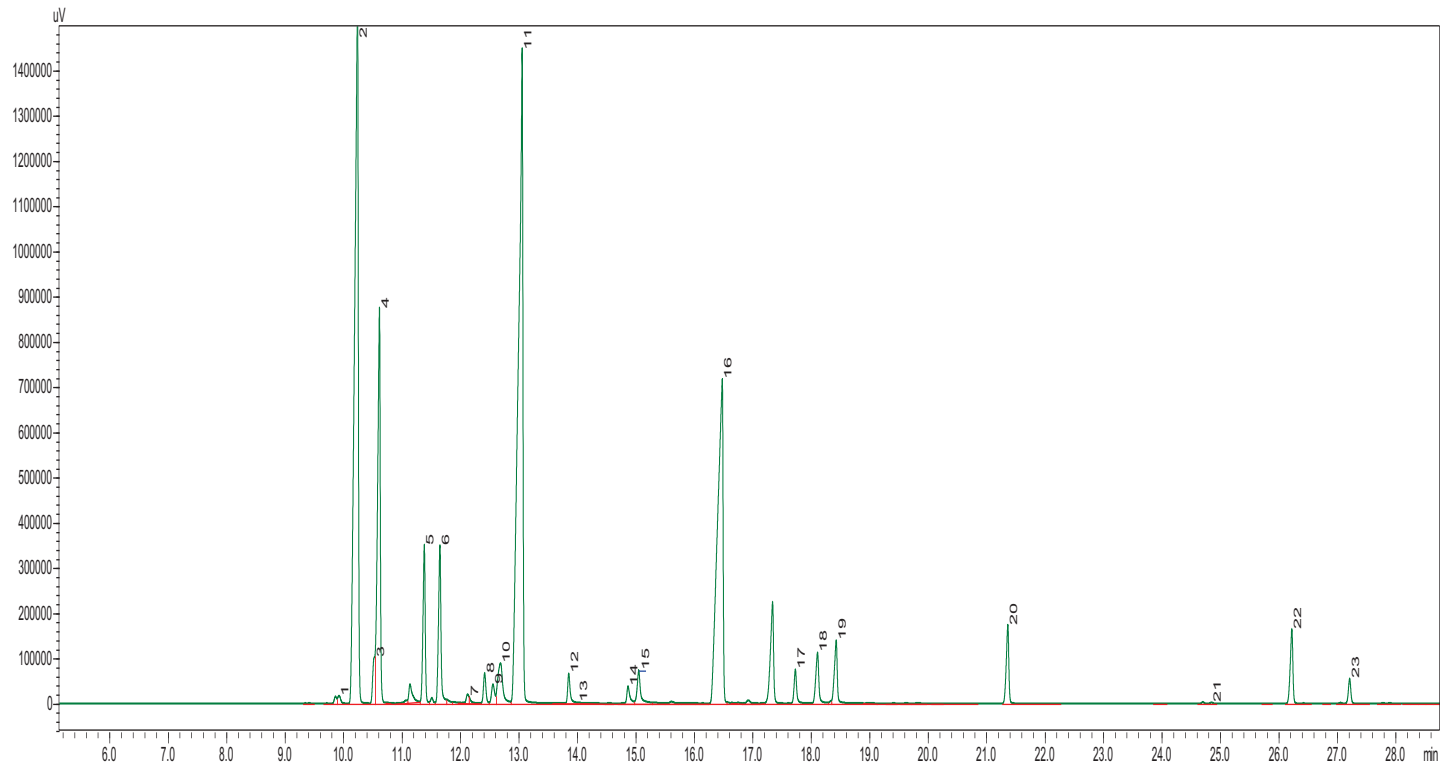


Rosemary Oil

Rosmarinus Officinalis

Typical GC Profile



Peak#	Name	Area%
1	ALPHA-THUJENE	0.22
2	ALPHA-PINENE	22.74
3	ALPHA-FENCHENE	0.86
4	CAMPHENE	9.66
5	BETA.-PINENE	3.15
6	MYRCENE	3.46
7	ALPHA-PHELLANDRENE	0.09
8	DELTA-3 CARENE	0.66
9	ALPHA-TERPINENE	0.52
10	P-CYMENE	1.79
11	EUCALYPTOL+ LIMONENE	26.21
12	GAMMA-TERPINENE	0.65
13	CIS -SABINENE HYDRATE	0.03
14	ALPHA- TERPINOLENE	0.46
15	LINALOOL	0.98
16	CAMPHOR	15.63
	BORNEOL	2.84
17	TERPINEN-4-OL	0.79
18	ALPHA-TERPINEOL	1.39
19	VERBENONE	1.74
20	BORNYL ACETATE	1.75
21	COPAENE	0.02
22	CARYOPHYLLENE	1.72
23	HUMULENE	0.54

Notes
