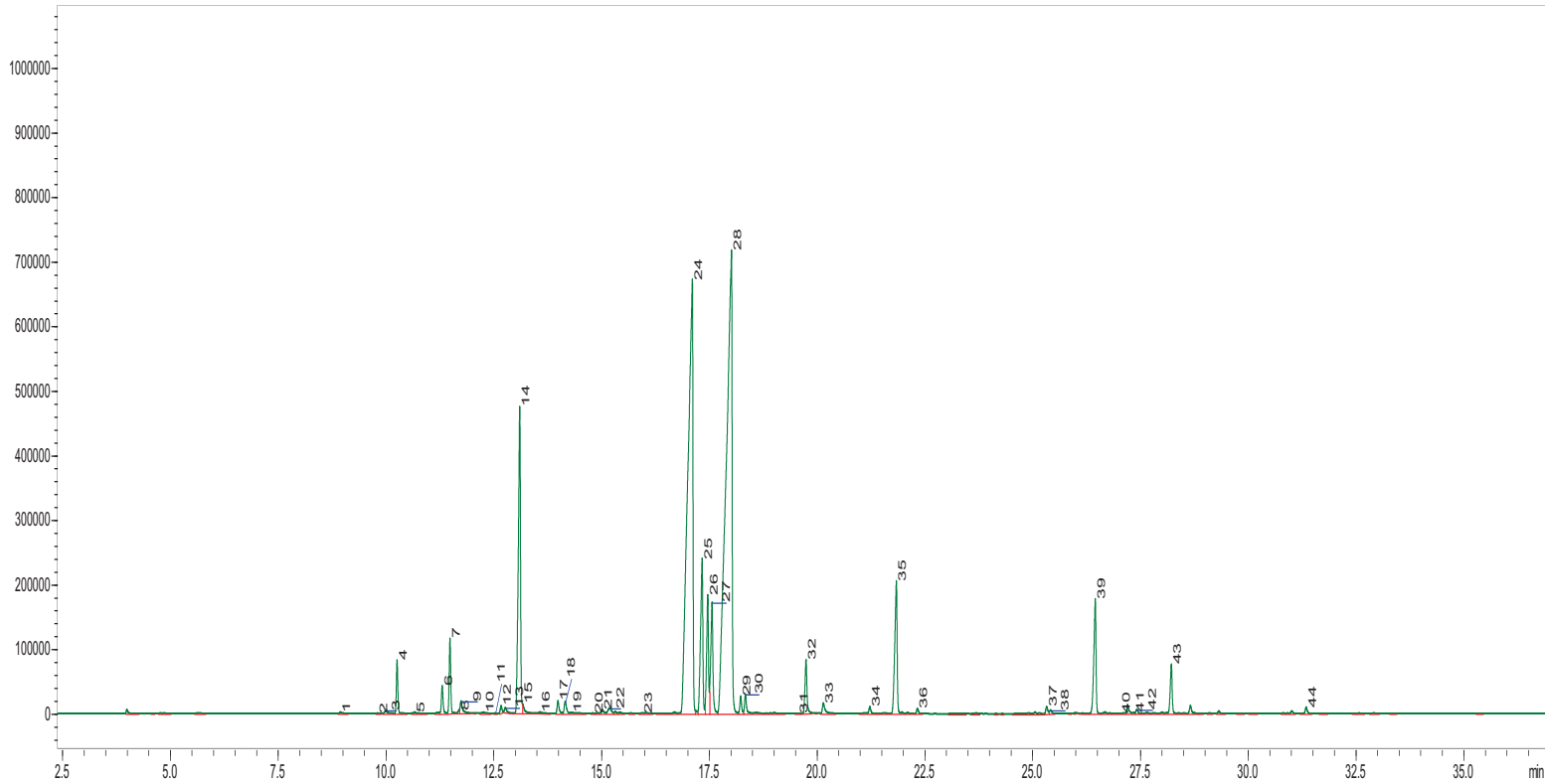


Peppermint Oil

Mentha Piperita

Typical GC Profile



Peak#	Name	Area%
1	FURAN, 2,5-DIETHYLTETRAHYDRO-	0.03
2	BETA-PINENE	0.01
3	ALPHA-THUJENE	0.11
4	ALPHA PINENE	0.97
5	CAMPHENE	0.02
6	SABINENE	0.58
7	BETA-PINENE	1.42
8	3-OCTANOL	0.05
9	MYRCENE	0.36
10	ALPHA-PHELLANDREN	0.04
11	DELTA-3-CARENE	0.01
12	ALPHA TERPINENE	0.14
13	PARA CYMENE	0.12
14	EUCALYPTOL+ LIMONENE	8.46
15	TRANS-BETA.-OCIMENE	0.26
16	CIS-BETA-OCIMENE	0.0
17	GAMMA-TERPINENE	0.31
18	CIS-SABINENE HYDRATE	0.34
19	CIS-LINALOOL OXIDE	0.06
20	TRANS-LINALOOL OXIDE	0.01
21	ALPHA- TERPINOLEN	0.11
22	LINALOOL	0.24
23	3-OCTANOL, ACETATE	0.02
24	MENTHONE	27.89
25	ISOMENTHONE	4.43
26	MENTHOFURAN	2.81
27	NEOMENTHOL	3.06
28	MENTHOL	34.32
29	ISOMENTHOL	0.39
30	ALPHA-TERPINEOL	0.48
31	CITRONELLOL	0.01
32	PULEGONE	1.32
33	PIPERITONE	0.33
34	NEOMENTHYL ACETATE	0.18
35	MENTHYL ACETATE	3.91
36	ISOMENTHYL ACETATE	0.13
37	BETA-BOURBONENE	0.18
38	BETA-ELEMENE	0.11
39	BETA-CARYOPHYLLENE	3.12
40	AROMANDENDRENE	0.01
41	GAMMA.-CADINENE	0.03
42	ALPHA-HUMULEN	0.11
43	GERMACRENE D	1.2
44	VIRIDIFLOROL	0.16

Notes
