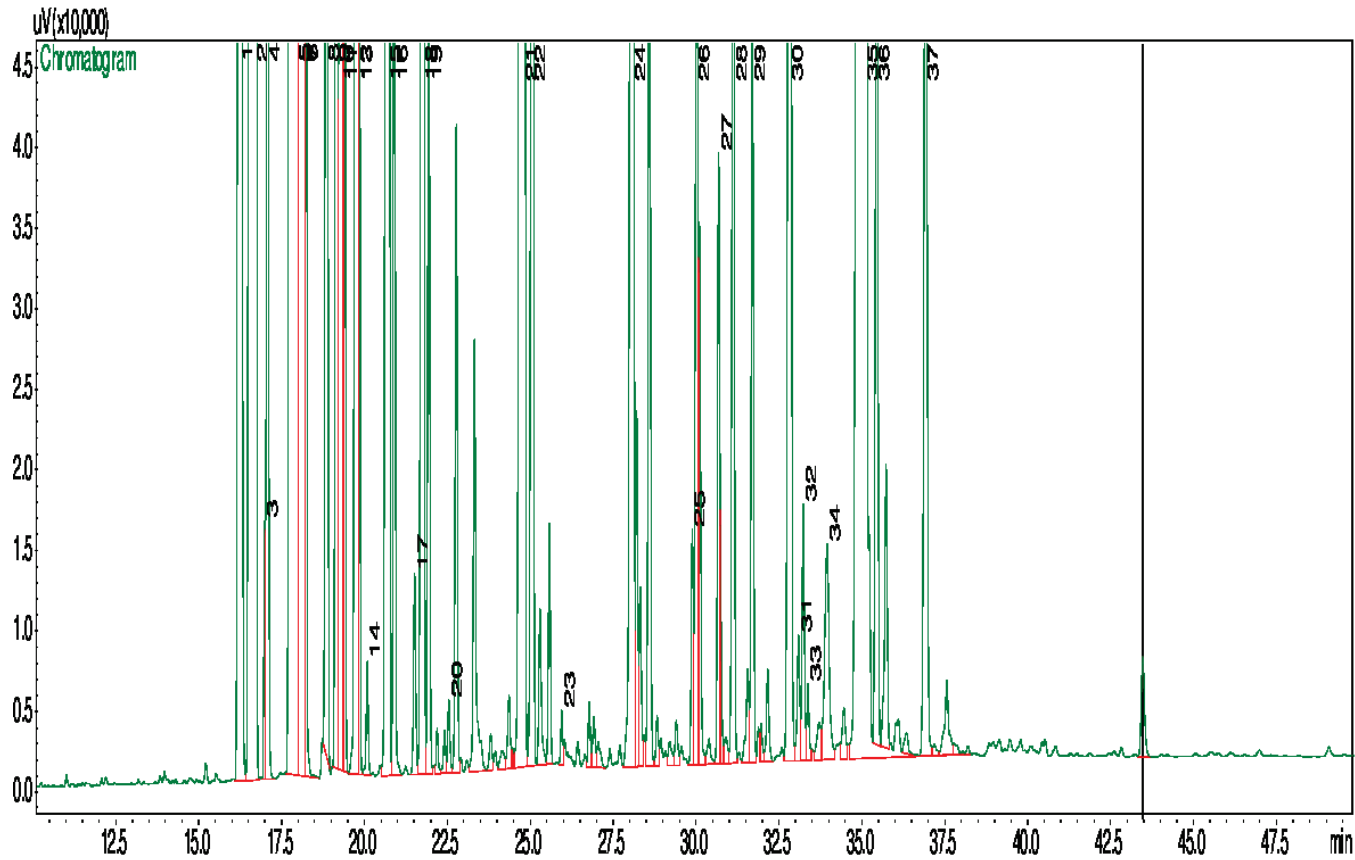


Nutmeg Oil

Myristica fragrans

Typical GC Profile



Peak#	Compound Name	Area%
1	ALPHA-THUJENE	1.75
2	ALPHA-PINENE	21.69
3	FENCHENE	0.05
4	CAMPHENE	0.31
5	SABINENE	19.65
6	BETA-PINENE	14.90
7	MYRCENE	2.60
8	ALPHA-PHELLANDRENE	0.78
9	DELTA-3-CARENE	1.03
10	ALPHA-TERPINENE	2.94
11	PARA-CYMENE	0.59
12	LIMONENE	5.61
13	BETA-PHELLANDRENE	0.44
14	TRANS-BETA-OCIMENE	0.03
15	GAMMA-TERPINENE	4.25
16	TRANS-SABINENE HYDRATE	0.31
17	ALPHA-PARA-DIMETHYL STYRENE	0.05
18	ALPHA-TERPINOLENE	1.88
19	CIS-SABINENE HYDRATE	0.22
20	FENCHYL ALCOHOL	0.02
21	TERPINEN-4-OL	4.42
22	ALPHA-TERPINEOL	0.65
23	CITRONELLOL	0.01
24	SAFROLE	1.53
25	CITRONELLYL ACETATE	0.06
26	EUGENOL	0.31
27	NERYL ACETATE	0.16
28	METHYL EUGENOL	0.39
29	ALPHA-COPAENE	0.21
30	ISOEUGENOL	0.89
31	BETA-CARYOPHYLENE	0.04
32	TRANS-ALPHA-BERGAMOTENE	0.07
33	TRANS-BETA-FARNESENE	0.02
34	METHYL ISOEUGENOL	0.11
35	MYRISTICIN	9.84
36	ELEMICIN	0.31
37	METHOXY EUGENOL	0.41

Notes
