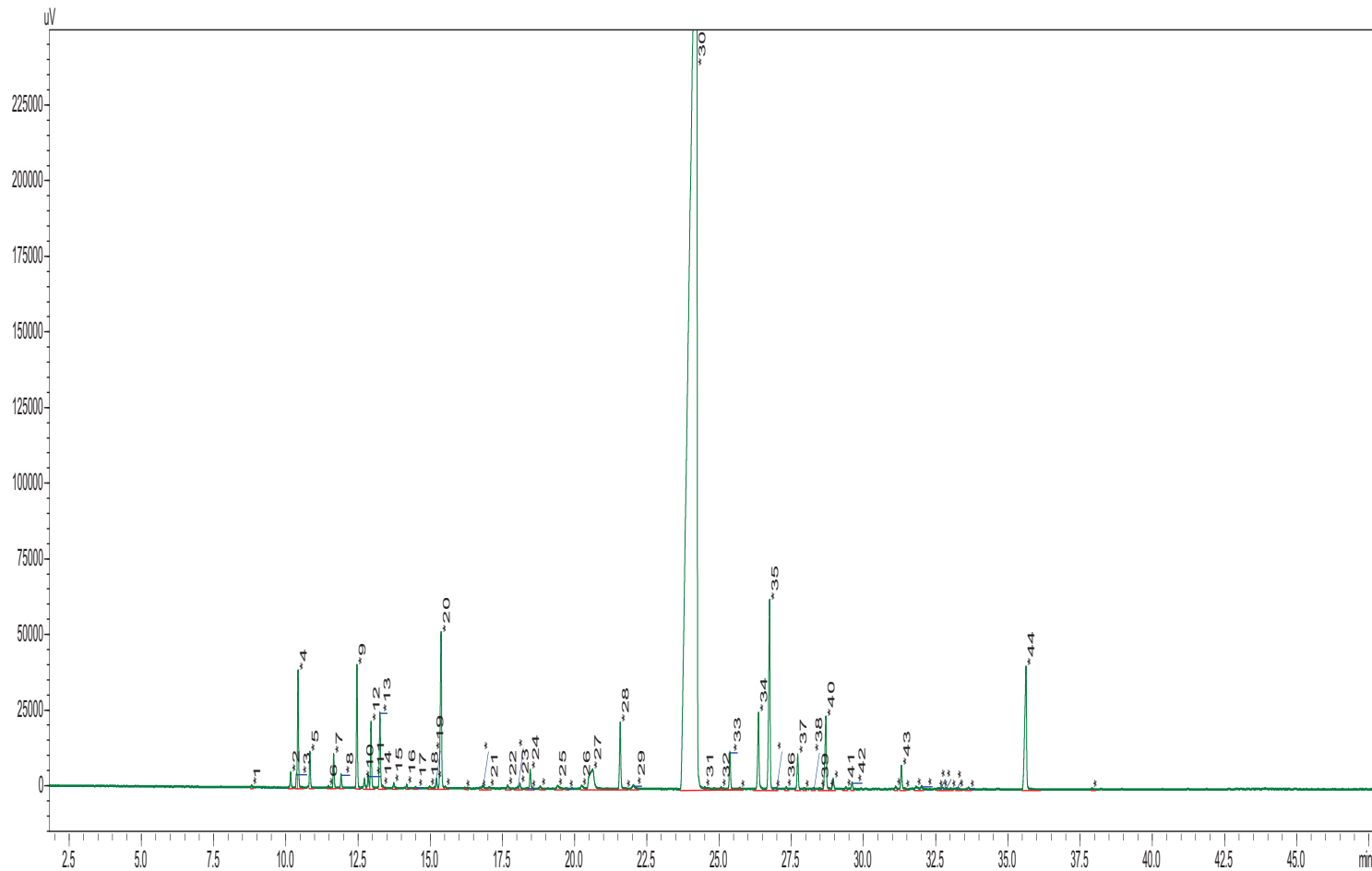


# Cinnamon Leaf Oil

# *Cinnamomum Zeylanicum*

## Typical GC Profile



Peak#	Name	Area%
1	Styrene	0.02
2	ALPHA-THUJENE	0.16
3	BENZALDEHYDE	0.12
4	ALPHA-PINENE	1.27
5	CAMPHENE	0.38
6	SABINENE	0.02
7	BETA-PINENE	0.36
8	BETA-MYRCENE	0.15
9	ALPHA-PHELLANDRENE	1.38
10	DELTA3-CARENE	0.12
11	ALPHA-TERPINENE	0.15
12	P-CYMENE	0.76
13	BETA PHELLADRENE	0.96
14	TRANS-BETA-OCIMENE	0.03
15	CIS-BETA-OCIMENE	0.06
16	GAMMA.-TERPINENE	0.04
17	CIS-LINALOOL OXIDE	0.01
18	TRANS-LINALOOL OXIDE	0.03
19	ALPHA-TERPINOLENE	0.01
20	LINALOOL	2.20
21	BENZYL ACETATE	0.03
22	BORNEOL	0.06
23	TERPINEN-4-OL	0.06
24	ALPHA-TERPINEOL	0.25
25	HYDROCINNAMIC ALCOHOL	0.09
26	CHAVICOL	0.09
27	CINNAMALDEHYDE	1.05
28	SAFROLE	0.90
29	CINNAMYL ALCOHOL	0.11
30	EUGENOL	78.22
31	ALPHA-CUBEBENE	0.01
32	METHYLEUGENOL	0.02
33	ALPHA-COPAENE	0.48
34	CINNAMYL ACETATE	1.17
35	CARYOPHYLLENE	2.92
36	AROMANDRENE	0.04
37	ALPHA-HUMULENE	0.47
38	GAMMA-MUUROLENE	0.03
39	GERMACRENE D	0.02
40	EUGENYL ACETATE	1.18
41	GAMMA-CADINENE	0.03
42	DELTA-CADINENE	0.10
43	CARYOPHYLLENE OXIDE	0.321
44	BENZYL BENZOATE	2.460

## Notes

---



---



---