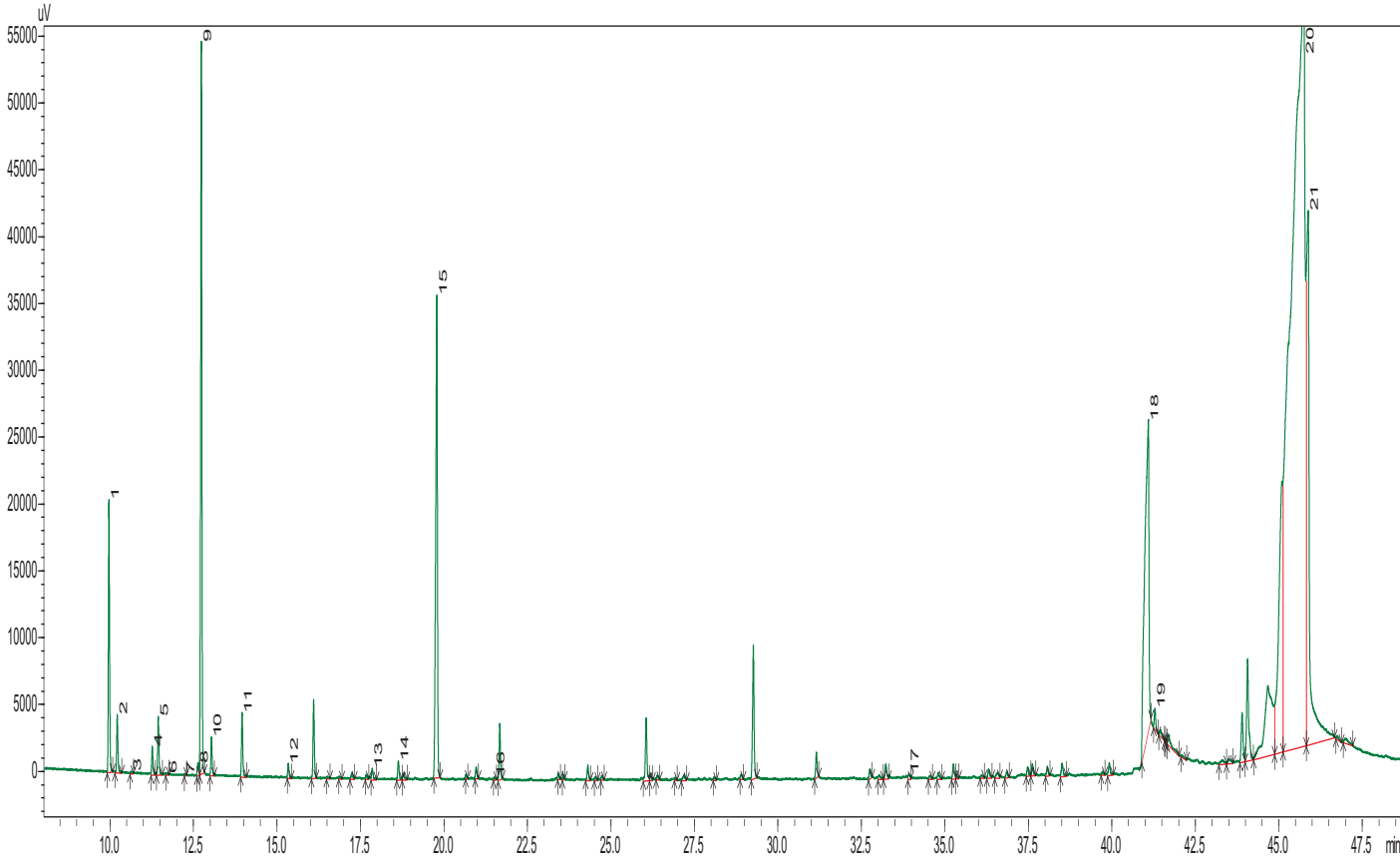


Black Seed Oil

Nigella Sativa

Typical GC Profile



Peak#	Name	Area%
1	ALPHA THUJENE	1.56
2	ALPHA PINENE	0.34
3	CAMPHENE	0.01
4	SABINENE	0.16
5	BETA PINENE	0.35
6	BETA-MYRCENE	0.01
7	ALPHA-PHELLANDRENE	0.01
8	ALPHA TERPINENE	0.07
9	PARA CYMENE	4.49
10	D-LIMONENE	0.23
11	GAMMA-TERPINENE	0.40
12	ALPHA-TERPINOLENE	0.09
13	TERPINEN-4-OL	0.07
14	ALPHA-TERPINEOL	0.12
15	THYMOQUINONE	4.14
16	BORNYL ACETATE	0.01
17	CURLONE	0.03
18	PALMITIC ACID,	6.39
19	2,3-DIHYDRO FARNESYL ACETATE	0.15
20	LINOLEIC ACID	51.95
21	OLEIC ACID	9.13

Notes
