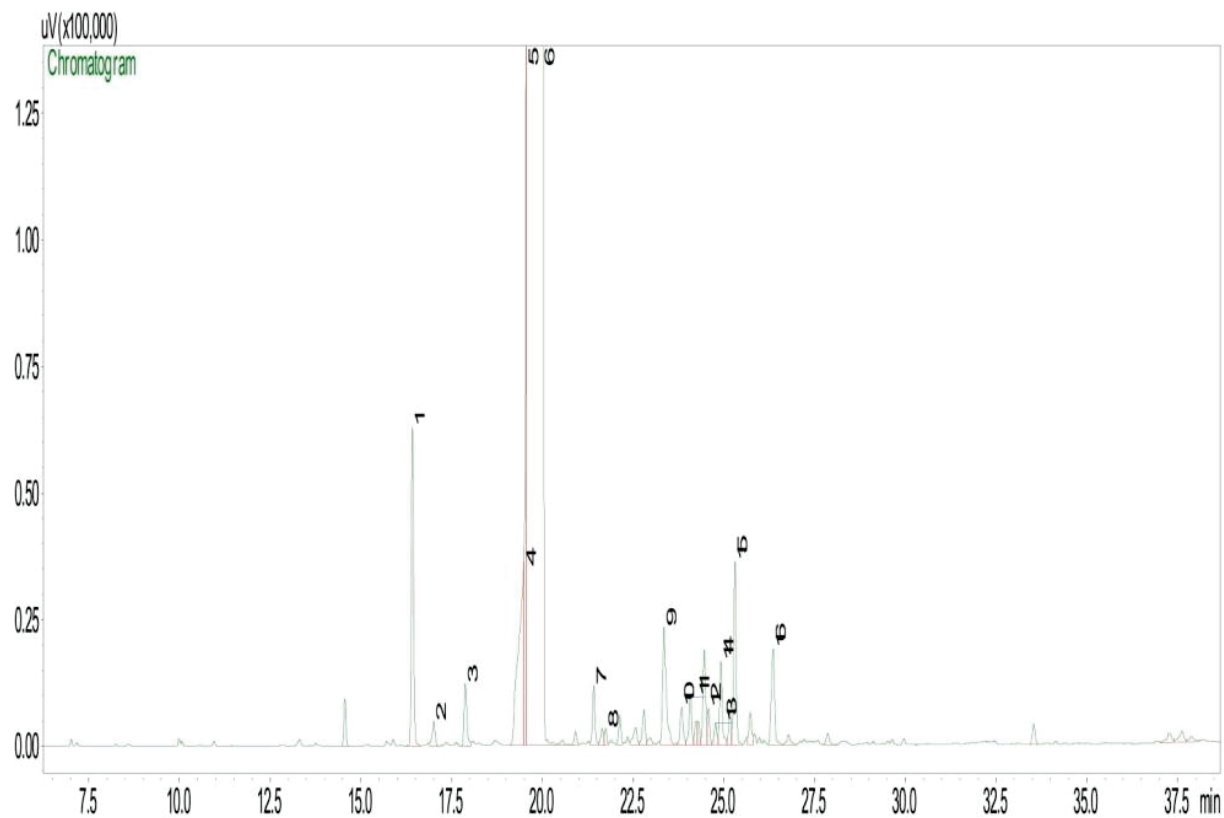


Eucalyptus Horistes Oil

Eucalyptus Horistes

Typical GC Profile



| Peak # | Compound Name | Area% |
|--------|-----------------------------|-------|
| 1 | ALPHA-PINENE | 0.38 |
| 2 | CAMPHENE | 0.04 |
| 3 | BETA-PINENE | 0.09 |
| 4 | PARA-CYMENE | 1.49 |
| 5 | LIMONENE | 0.26 |
| 6 | 1,8-CINEOL | 94.75 |
| 7 | ALPHA-PARA-DIMETHYL STYRENE | 0.08 |
| 8 | LINALOOL | 0.05 |
| 9 | T-PINOCARVEOL | 0.24 |
| 10 | PINOCARVONE | 0.06 |
| 11 | DELTA-TERPINEOL | 0.14 |
| 12 | TERPINEN-4-OL | 0.26 |
| 13 | ALPHA-TERPINEOL | 0.17 |
| 14 | MYRTENAL | 0.15 |
| 15 | VERBENONE | 0.38 |
| 16 | CARVONE | 0.29 |

Notes
