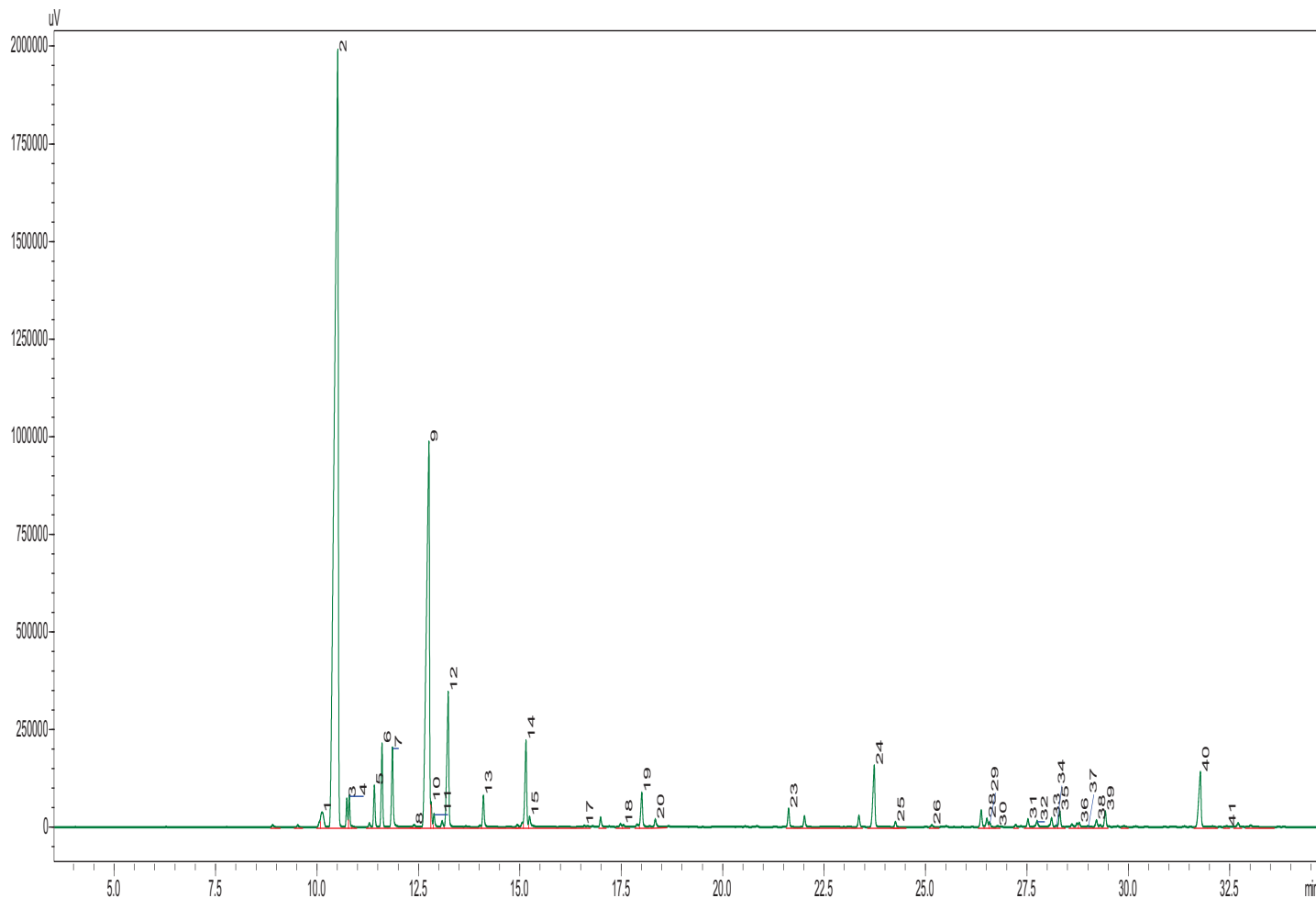


Typical GC Profile



PEAK#	NAME	AREA%
1	ALPHA-THUJENE	0.79
2	ALPHA-PINENE	49.57
3	ALPHA-FENCHENE	0.65
4	CAMPHENE	0.67
5	SABINENE	1.02
6	BETA-PINENE	2.03
7	MYRCENE	2.27
8	ALPHA-PHELLANDRENE	0.08
9	DELTA3-CARENE	19.99
10	ALPHA-TERPINENE	0.49
11	P CYMENE	0.36
12	D-LIMONENE	4.49
13	GAMMA-TERPINENE	0.89
14	ALPHA-TERPINOLENE	2.61
15	LINALOOL	0.41
16	FENCHOL	0.02
17	CAMPHOR	0.04
18	BORNEOL	0.08
19	TERPINEN-4-OL	1.1
20	ALPHA-TERPINEOL	0.28
21	MYRTENOL	0.01
22	LINALYL ACETATE	0.03
23	BORNYL ACETATE	0.52
24	TERPINYL ACETATE	2.16
25	ALPHA-CUBEENE	0.15
26	ALPHA-COPAENE	0.06
27	BETA-ELEMENE	0.03
28	CARYOPHYLLENE	0.27
29	BETA-CEDRENE	0.14
30	CIS-THUJOPSENE	0.02
31	HUMULENE	0.24
32	EPI-BICYCLOSQUIPHELLANDREN	0.26
33	GAMMA-MUUROLENE	0.32
34	ALPHA-AMORPHENE	0.04
35	GERMACRENE D	0.48
36	ALPHA-MUUROLEN	0.15
37	BETA-CADINENE	0.05
38	GAMMA-CADINENE	0.22
39	DELTA-CADINENE	0.47
40	CEDROL	2.23
41	BETA-ACORENOL	0.04

Notes
