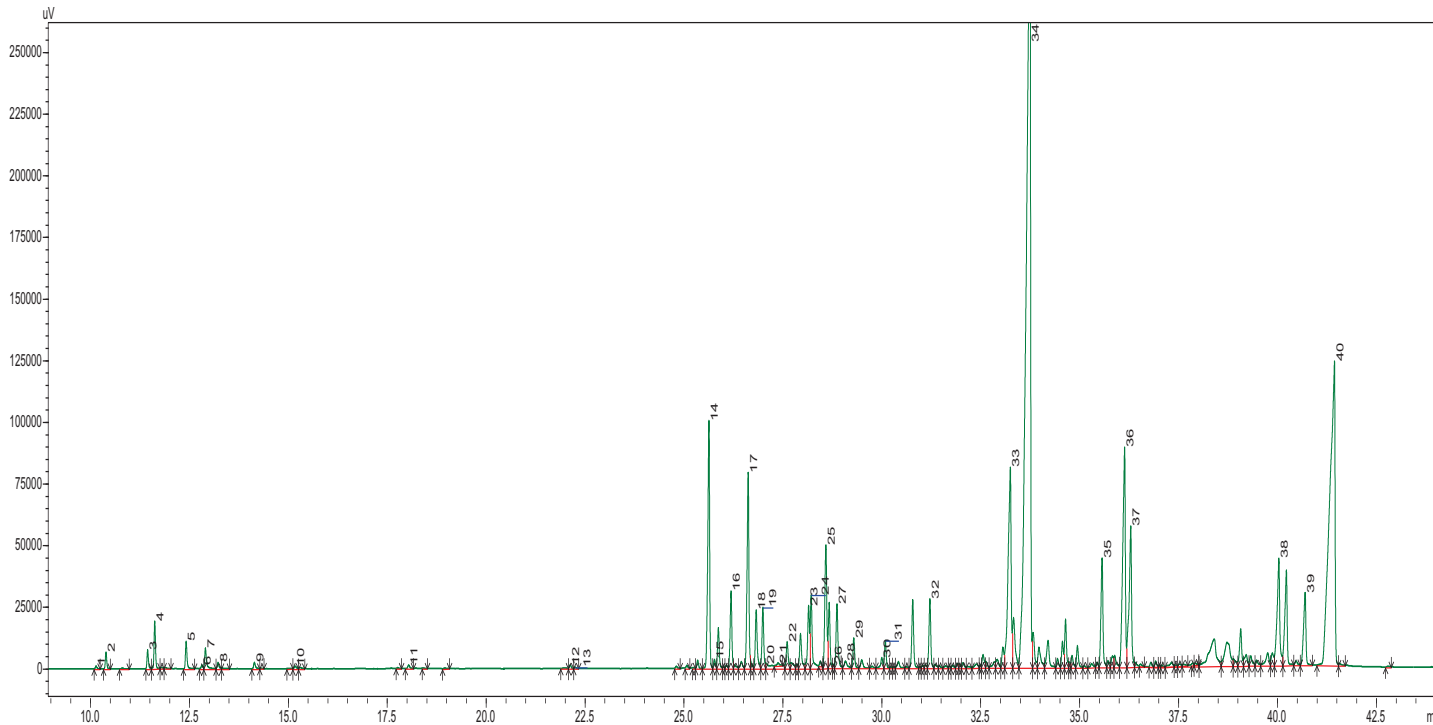


# Costus Root Oil

*Saussurea Lappa*

## Typical GC Profile



PEAK#	NAME	AREA%
1	ALPHA THUJENE	0.03
2	ALPHA-PINENE	0.19
3	SABINENE	0.23
4	BETA-PINENE	0.58
5	ALPHA-PHELLANDRENE	0.37
6	ALPHA TERPINENE	0.05
7	P -CYMENE	0.32
8	LIMONENE	0.09
9	GAMMA-TERPINENE	0.10
10	ALPHA-TERPINOLENE	0.04
11	TERPINEN-4-OL	0.06
12	DIHYDROEDULAN	0.05
13	DIHYDROEDULAN II	0.02
14	BETA-ELEMENE	3.84
15	CIS EUDESMA-6,11-DIENE	0.13
16	ALPHA-IONONE	1.11
17	CARYOPHYLLENE	2.99
18	NERYLACETONE	0.96
19	TRANS-ALPHA-BERGAMOTENE	0.91
20	SEQUISABINENE	0.39
21	BETA-FAMESENE	0.06
22	ALPHA HUMULENE	0.44
23	AR-CURCUMENE	1.00
24	GAMMA-CURCUMENE	1.25
25	BETA-SELINENE	2.07
26	BETA-EUDESME	0.06
27	ALPHA SELINENE	1.07
28	BETA-BISABOLENE	0.19
29	GAMMA-BISABOLENE	0.43
30	ALPHA-BISABOLENE	0.18
31	ELEMOL	0.40
32	CARYOPHYLLENE OXIDE	1.05
33	NEOINTERMEDEOL	5.04
34	9,12,15-OCTADECATRIEN-1-OL	27.87
35	GAMMA COSTOL	1.86
36	BETA COSTOL	4.70
37	ALPHA COSTOL	3.00
38	DIHYDRODEHYDROCOSTUS LACTONE	2.43
39	BETA-CYCLOCOSTUNOLIDE	1.41
40	DEHYDROCOSTUSLACTONE(EREMANTHIN)	13.54

## Notes

-----

-----

-----