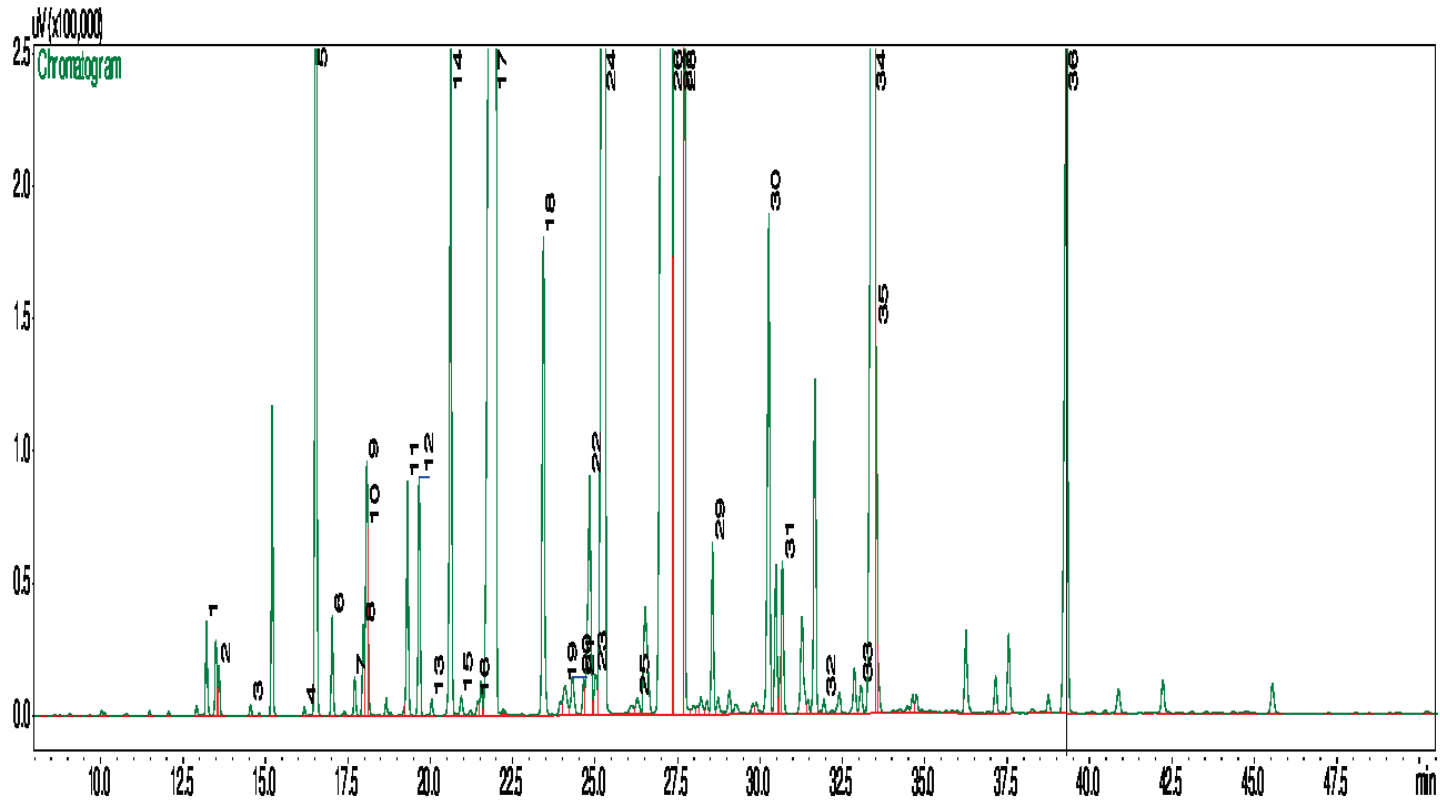


# Coriander Oil

# Coriandrum Sativum

## Typical GC Profile



Peak#	Compound Name	Area%
1	CIS-3-HEXENOL	0.18
2	HEXANOL	0.10
3	HEPTANAL	0.02
4	ALPHA-THUJENE	0.02
5	ALPHA-PINENE	1.91
6	CAMPHENE	0.19
7	SABINENE	0.07
8	BETA-PINENE	0.18
9	OCTANAL	0.46
10	MYRCENE	0.15
11	PARA-CYMENE	0.46
12	LIMONENE	0.47
13	TRANS-BETA-OCIMENE	0.03
14	GAMMA-TERPINENE	1.46
15	CIS-LINALOOL OXIDE	0.05
16	TRANS-LINAL OXIDE	0.03
17	LINALOOL	18.72
18	CAMPHOR	1.12
19	2(E)-NONENAL	0.12
20	BORNEOL	0.13
21	TERPINEN-4-OL	0.08
22	4(E)-DECENAL	0.78
23	ALPHA-TERPINEOL	0.12
24	DECANAL	6.92
25	NERAL	0.06
26	2(E)-DECENAL	27.78
27	2-DODECEN-1-OL	18.53
28	1-DECANOL	3.28
29	UNDECANAL	0.37
30	8-(Z)-UNDECENAL	1.26
31	NERYL ACETATE	0.33
32	BETA-ELEMENE	0.03
33	BETA-CARYOPHYLLENE	0.07
34	2(E)-DODECENAL	6.19
35	2(E)-DODECE-1-OL	0.50
36	2(E)-TRIDECENAL	2.63

## Notes

-----

-----

-----