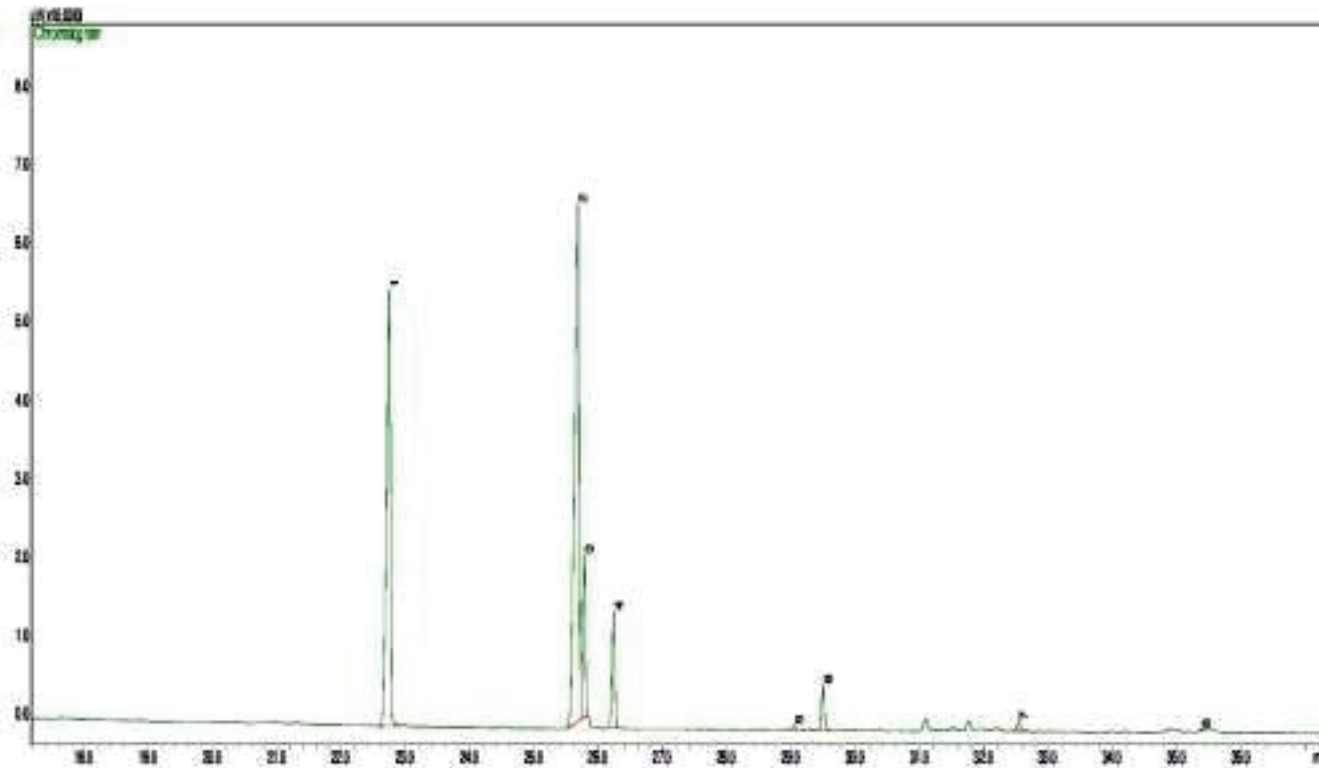


Typical GC Profile



| Peak# | Compound Name | Area% |
|-------|------------------------|-------|
| 1 | PALMITIC ACID | 34.15 |
| 2 | LINOLEIC ACID | 45.94 |
| 3 | OLEIC ACID | 9.12 |
| 4 | STEARIC ACID | 6.76 |
| 5 | CIS-11-EICOSENOIC ACID | 0.30 |
| 6 | ARACHIDIC ACID | 2.83 |
| 7 | BEHENIC ACID | 0.80 |
| 8 | LIGNOCERIC ACID | 0.09 |

Notes
