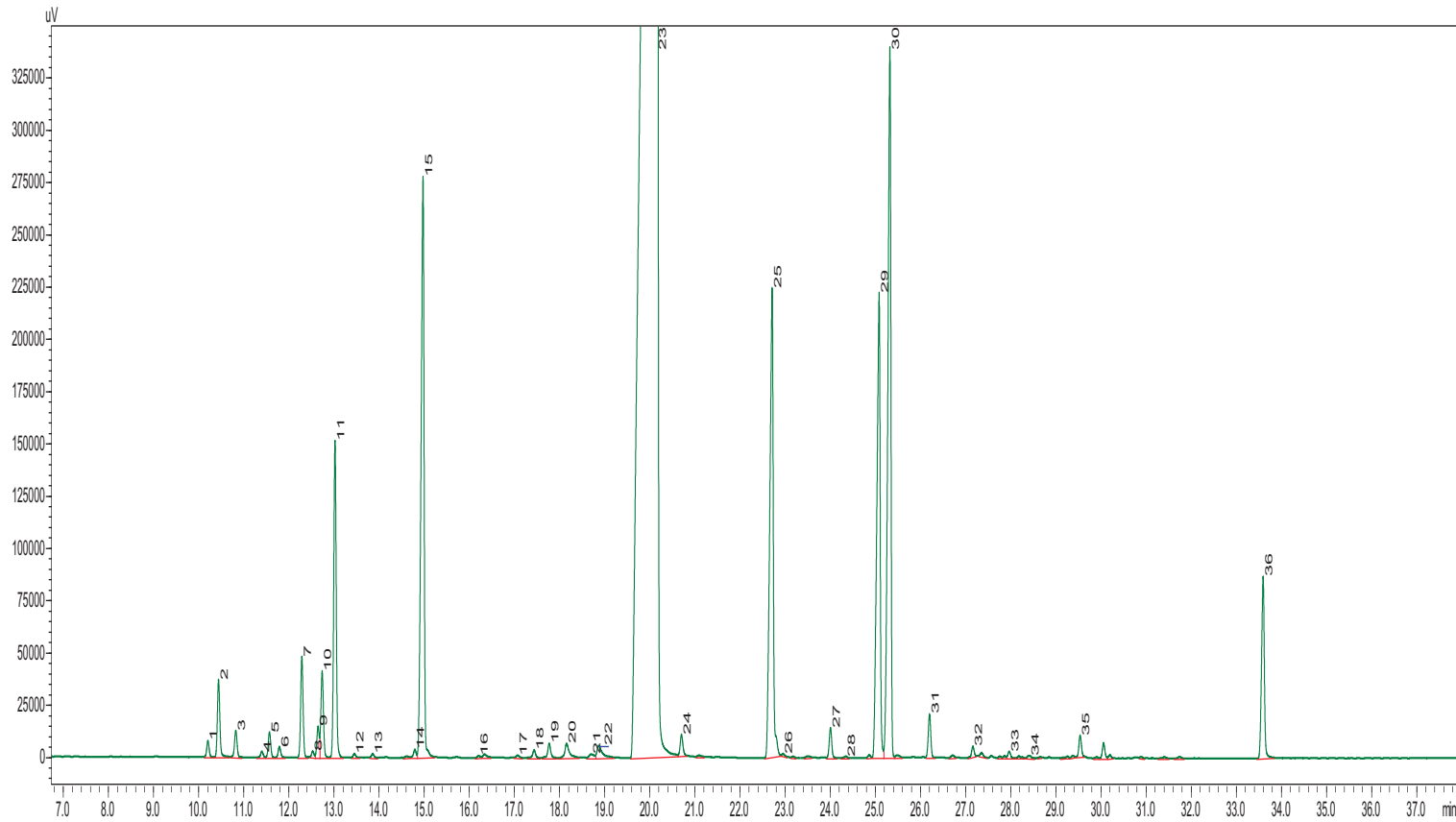


# Cinnamon Bark Oil

*Cinnamomum Zeylanicum*

## Typical GC Profile



Peak#	Name	Area%
1	ALPHA THUJENE	0.11
2	ALPHA-PINENE	0.54
3	CAMPHENE	0.19
4	SABINENE	0.04
5	BETA PINENE	0.18
6	BETA-MYRCENE	0.08
7	ALPHA-PHELLANDRENE	0.68
8	DELTA-3-CARENE	0.04
9	ALPHA TERPINENE	0.20
10	PARA -CYMENE	0.62
11	D-LIMONENE	2.22
12	BET A OCIMENE	0.03
13	GAMMA-TERPINENE	0.03
14	TERPINOLENE	0.06
15	LINALOOL	4.93
16	CAMPHOR	0.02
17	BORNEOL	0.02
18	TERPINEN-4-OL	0.07
19	ALPHA TERPINEOL	0.12
20	CINNAMALDEHYDE	0.17
21	HYDROCINNAMIC ALCOHOL	0.05
22	O-ANISALDEHYDE	0.18
23	CINNAMALDEHYDE	71.65
24	SAFROLE	0.16
25	EUGENOL	4.54
26	HYDROCINNAMYL ACETATE	0.01
27	ALPHA-COPAENE	0.21
28	BETA-ELEMENE	0.01
29	CINNAMYL ACETATE	4.33
30	CARYOPHYLLENE	6.09
31	HUMULENE ALPHA	0.31
32	ISOEUGENYL ACETATE	0.07
33	DELTA CADINENE	0.05
34	ALPHA BISABOLENE	0.03
35	CARYOPHYLLENE OXIDE	0.15
36	BENZYL BENZOATE	0.42

## Notes

-----

-----

-----