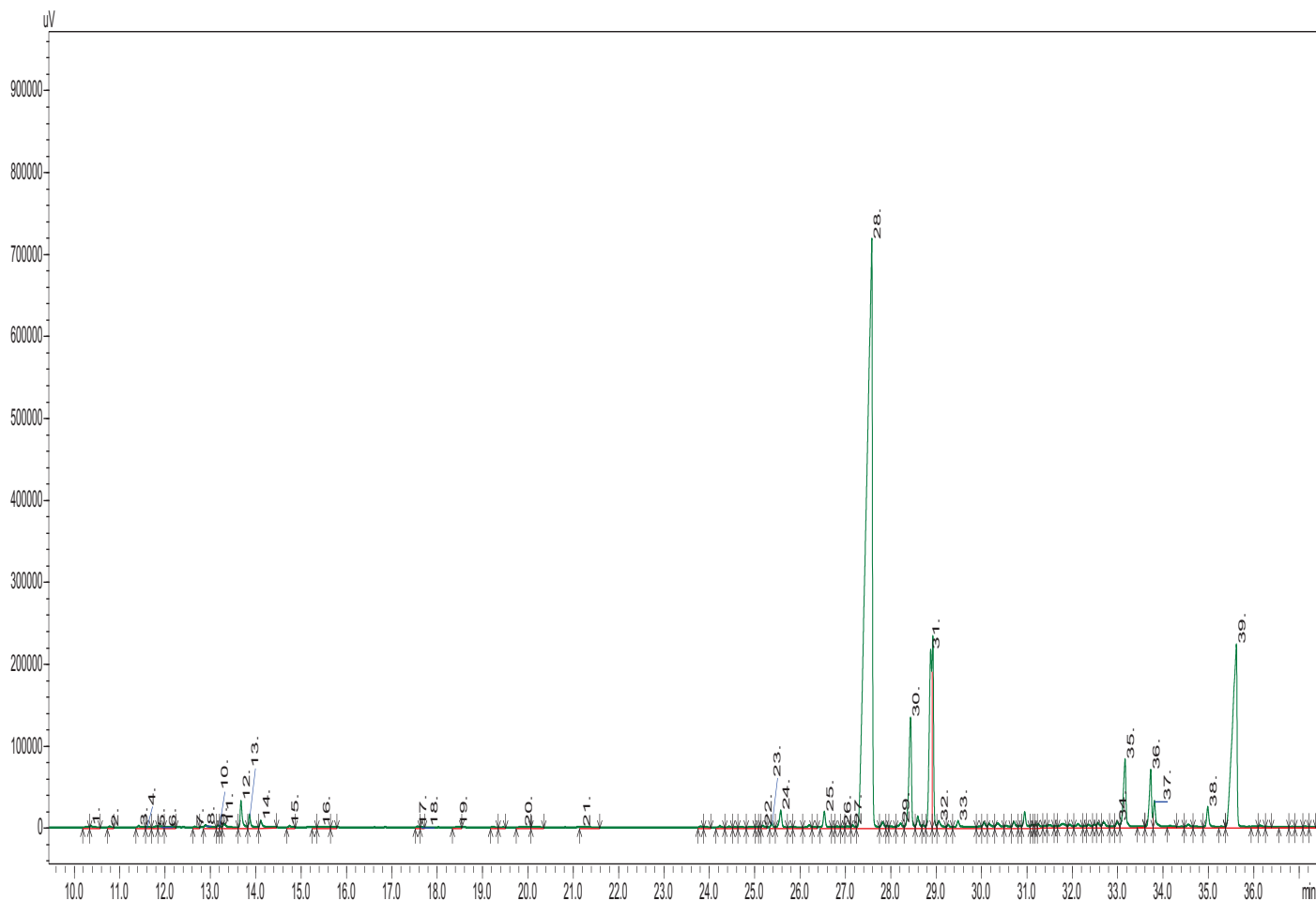


# Chamomile Oil Blue

# Matricaria Chamomilla

## Typical GC Profile



### Notes

-----

-----

-----

Peak#	Name	Area%
1.	ALPHA-PINENE	0.05
2.	CAMPHENE	0.02
3.	SABINENE	0.0
4.	BETA.-PINENE	0.02
5.	FURAN, 2-PENTYL-	0.03
6.	BETA MYRCENE	0.06
7.	DELTA-3-CARENE	0.02
8.	P CYMENE	0.10
9.	EUCALYPTOL	0.04
10.	LIMONENE	0.03
11.	TRANS-BETA-OCIMENE	0.15
12.	CIS-BETA-OCIMENE	0.75
13.	ARTEMISIA KETONE	0.36
14.	GAMMA-TERPINENE	0.24
15.	ARTEMISIA ALCOHOL	0.04
16.	2-METHYLBUTYL 2-METHYLBUTYRATE	0.05
17.	BORNEOL	0.02
18.	ARTEMISYL ACETATE	0.01
19.	ALPHA TERPINEOL	0.01
20.	CIS-3-HEXENYL ISOVALERATE	0.05
21.	BORNYL ACETATE	0.03
22.	COPAENE	0.06
23.	MODEPHENE	0.11
24.	ISOCOMENE	0.56
25.	CARYOPHYLLENE	0.46
26.	TRANS-ALPHA.-BERGAMOTENE	0.03
27.	AROMANDENDRENE	0.07
28.	BETA.-FARNESENE	49.45
29.	GAMMA-MUUROLENE	0.19
30.	GERMACRENE D	3.93
31.	GAMMA-ELEMENE	5.61
32.	BETA.-BISABOLENE	0.29
33.	DELTA-CADINENE	0.29
34.	BETA-EUDESMOL	0.20
35.	BISABOLOL OXIDE B	2.66
36.	BISABOLONE OXIDE A	1.84
37.	ALPHA-BISABOLOL	1.02
38.	CHAMAZULENE	0.71
39.	BISABOLOXIDE A	11.94