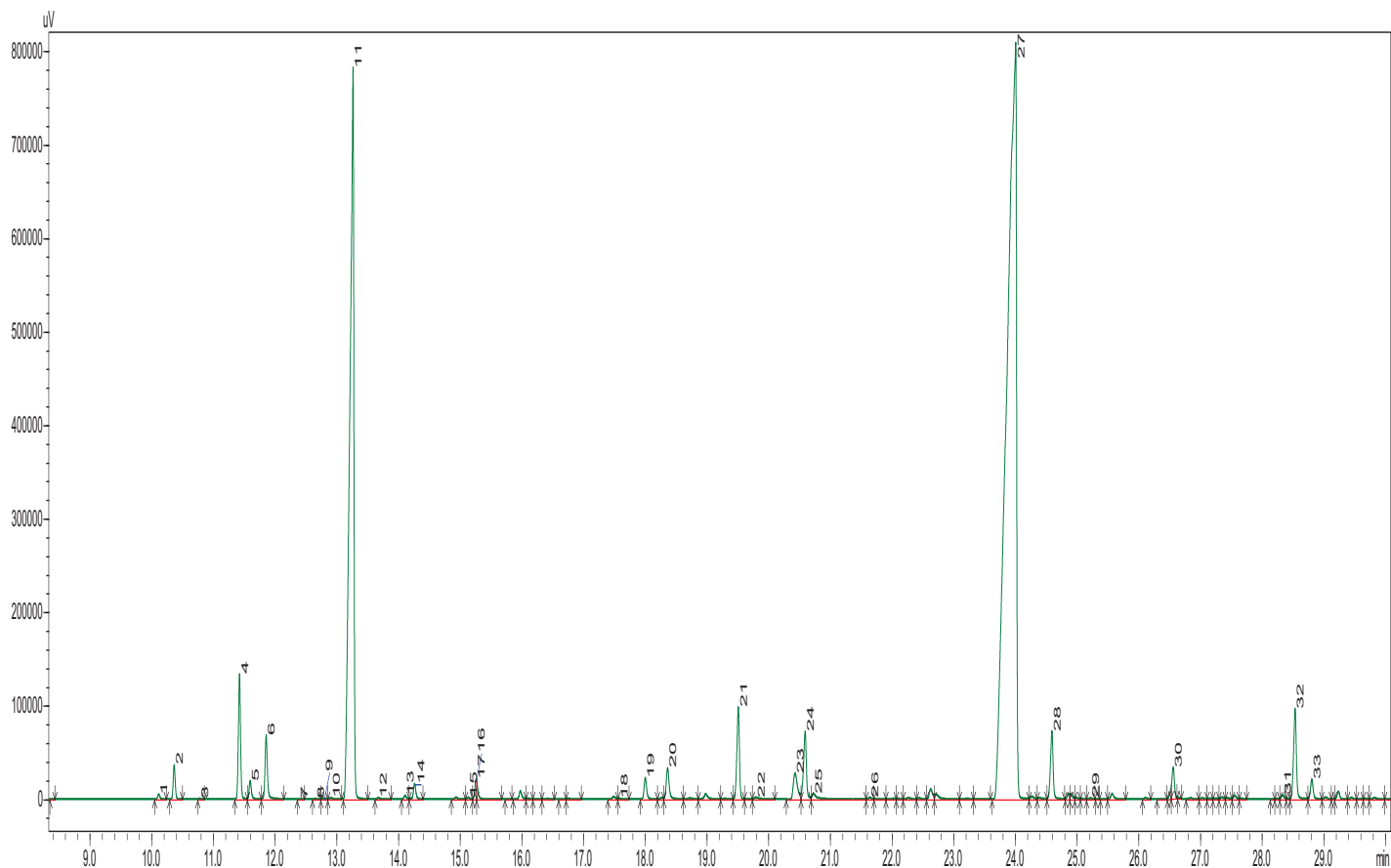


# Cardamom Green Oil

# *Elettaria Cardamomum*

## Typical GC Profile



| Peak# | Name                   | Area% |
|-------|------------------------|-------|
| 1     | ALPHA-THUJENE          | 0.08  |
| 2     | ALPHA-PINENE           | 0.53  |
| 3     | CAMPHENE               | 0.0   |
| 4     | SABINENE               | 2.06  |
| 5     | BETA-PINENE            | 0.33  |
| 6     | BETA-MYRCENE           | 1.15  |
| 7     | 1-PHELLANDRENE         | 0.01  |
| 8     | DELTA-3 CARENE         | 0.01  |
| 9     | ALPHA-TERPINENE        | 0.02  |
| 10    | BETA-CYMENE            | 0.04  |
| 11    | EUCALYPTOL + LIMONENE  | 22.49 |
| 12    | BETA-OCIMENE           | 0.03  |
| 13    | GAMMA-TERPINENE        | 0.07  |
| 14    | TRANS-SABINENE HYDRATE | 0.29  |
| 15    | ALPHA-TERPINOLENE      | 0.04  |
| 16    | LINALOOL               | 0.19  |
| 17    | CIS-SABINENE HYDRATE   | 0.26  |
| 18    | BORNEOL                | 0.03  |
| 19    | TERPINEN-4-OL          | 0.44  |
| 20    | ALPHA.-TERPINEOL       | 0.72  |
| 21    | GAMMA-TERPINEOL        | 1.78  |
| 22    | NERAL                  | 0.08  |
| 23    | GERANIOL               | 0.82  |
| 24    | LINALYL ACETATE        | 1.50  |
| 25    | GERANIAL               | 0.27  |
| 26    | BORNYL ACETATE         | 0.04  |
| 27    | TERPINYL ACETATE       | 55.30 |
| 28    | GERANYL ACETATE        | 1.38  |
| 29    | ALPHA-COPAENE          | 0.02  |
| 30    | CARYOPHYLLENE          | 0.59  |
| 31    | GERMACRENE-D           | 0.09  |
| 32    | BETA-SELINENE          | 1.93  |
| 33    | ALPHA-SELINENE         | 0.41  |

## Notes

-----

-----

-----