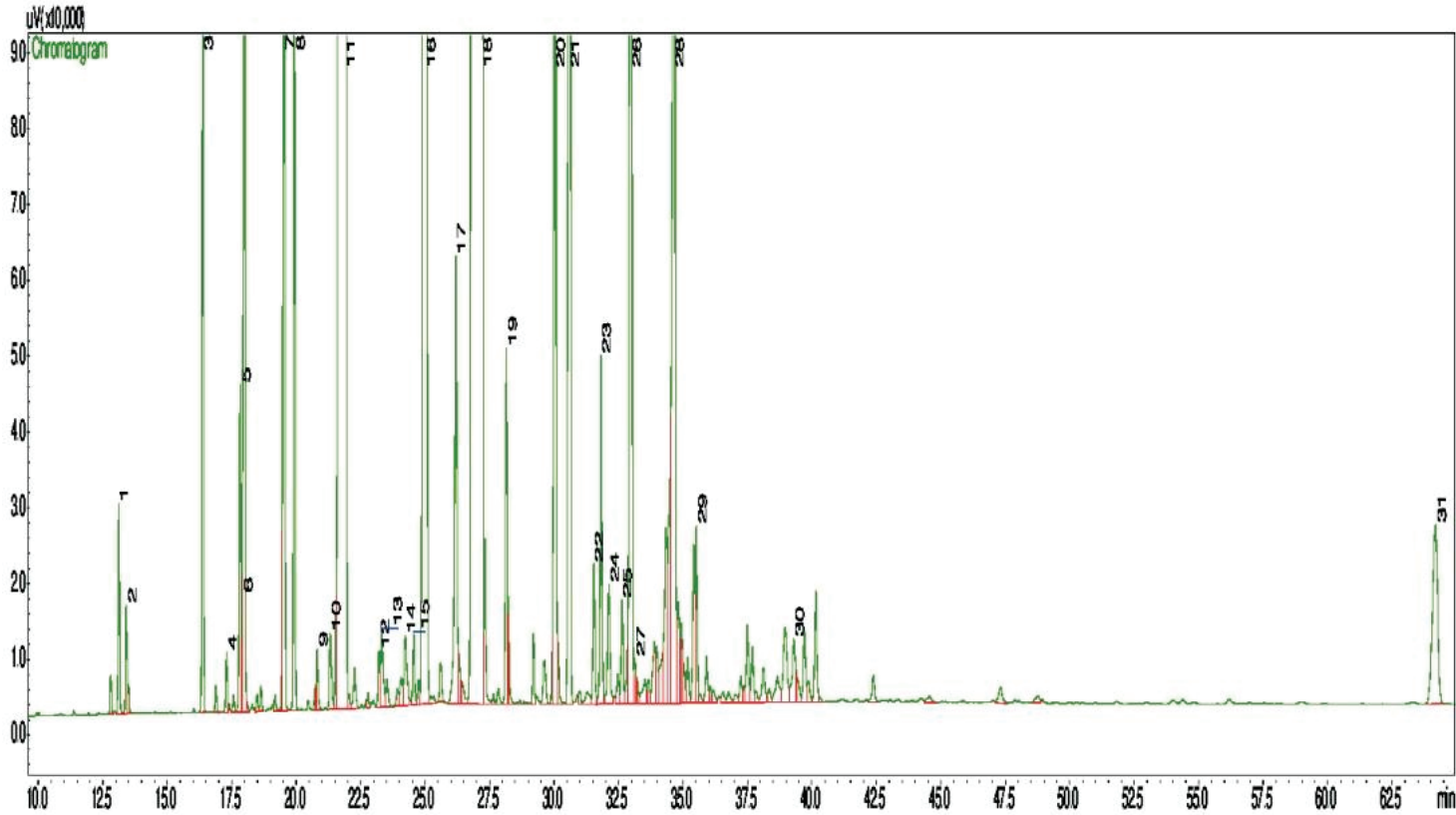


Clary Sage Oil

Salvia Sclarea

Typical GC Profile



Peak	Compound Name	Area%
1	CIS-2-HEXENOL	0.13
2	CIS-2-HEXENOL	0.07
3	ALPHA-PINENE	0.47
4	1-OCTEN-3-OL	0.04
5	BETA-PINENE	0.23
6	MYRCENE	0.03
7	LIMONENE	0.90
8	TRANS-BETA-OCIMENE	0.56
9	CIS-LINALOOL OXIDE	0.05
10	TRANS-LINALOOL OXIDE	0.07
11	LINALOOL	22.84
12	TRANS-SABINOL	0.04
13	CAMPHOR	0.088
14	BORNEOL	0.09
15	TERPINEN-4-OL	0.06
16	ALPHA-TERPINEOL	3.12
17	NEROL	0.47
18	LINALYL ACETATE	57.16
19	BORNYL ACETATE	0.27
20	NERYL ACETATE	1.21
21	GERANYL ACETATE	2.19
22	ALPHA-COPAENE	0.12
23	BETA-ELEMENE	0.30
24	COUMARIN	0.13
25	ALPHA-GURJUNENE	0.09
26	BETA-CARYOPHYLLENE	2.30
27	BETA-COPAENE	0.04
28	GERMACRENE D	1.67
29	DELTA-CADINENE	0.15
30	ALPHA-CADINOL	0.09
31	SCLAREOL	0.42

Notes
