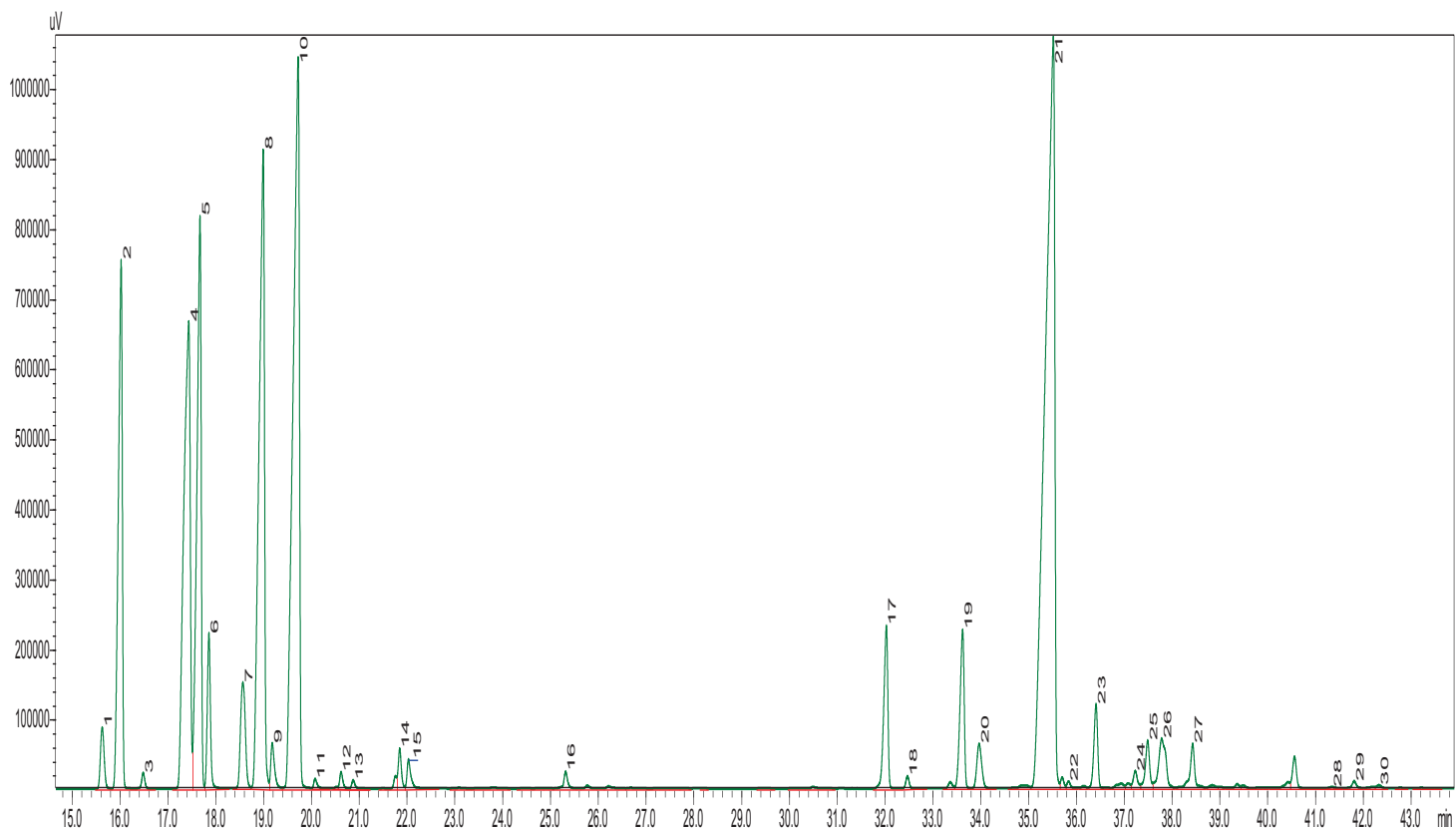


Black Pepper Oil

Piper nigrum L.

Typical GC Profile



Peak#	NAME	Area%
1	ALPHA-THUJENE	0.81
2	ALPHA-PINEN	7.484
3	CAMPHENE	0.187
4	SABINEN	10.640
5	BETA-PINEN	8.747
6	BETA-MYRCENE	1.742
7	ALPHA PHELLANDRENE	1.831
8	D-3 CARENE	12.297
9	P CYMENE	0.612
10	D-LIMONENE	16.448
11	BETA-OCIMENE	0.106
12	GAMMA-TERPINENE	0.188
13	TRANS-SABINENE HYDRATE	0.099
14	ALPHA- TERPINOLEN	0.451
15	LINALOOL	0.405
16	TERPINENE 4 OL	0.243
17	ALPHA-TERPINEOL	2.352
18	ALPHA-CUBEBENE	0.148
19	COPAENE	2.353
20	ELEMENE	0.782
21	TRANS BETA CARYOPHYLLENE	25.629
22	BETA-FARNESENE	0.101
23	ALPHA-HUMULEN	1.135
24	GERMACRENE D	0.261
25	EPIGLOBULOL	0.718
26	ALPHA-SELINENE	1.285
27	DELTA-CADINENE	0.751
28	HUMULENE OXIDE	0.022
29	ISOSPATHULENOL	0.105
30	TAU-CADINOL	0.048

Notes
