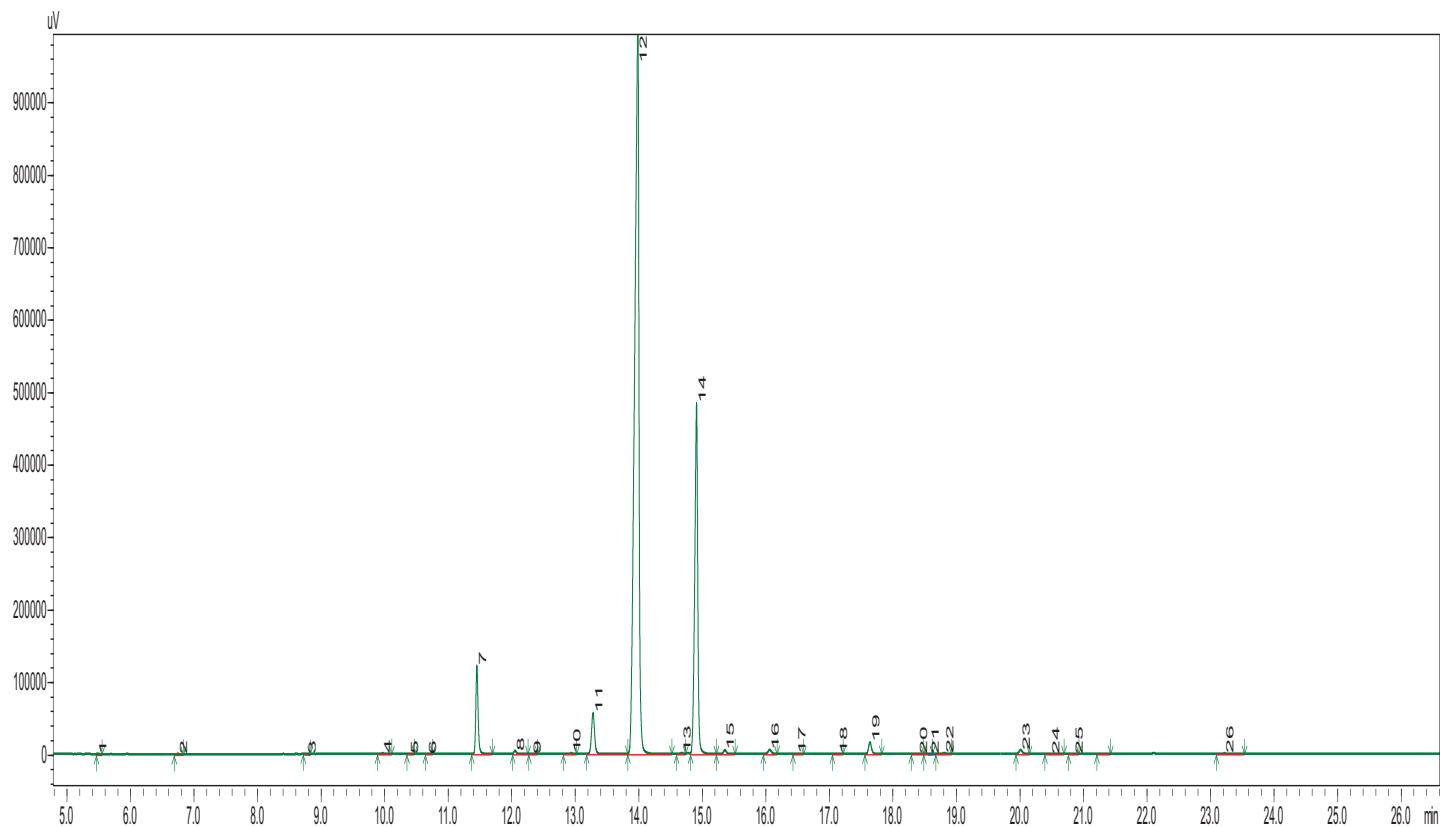


# Apricot Oil

*Prunus Armeniaca I.*

## Typical GC Profile



Peak#	Name	Area%
1	CAPROIC ACID	0.02
2	CAPRYLIC ACID	0.02
3	LAURIC ACID	0.02
4	MYRISTIC ACID	0.04
5	MYRISTOLEIC ACID	0.01
6	PENTADECANOIC ACID	0.01
7	PALMITIC ACID	4.38
8	PALMITOLEIC ACID	0.18
9	HEPTADECANOIC ACID	0.03
10	CIS-10 PENTADECANOIC ACID	0.04
11	STEARIC ACID	2.76
12	OLEIC ACID	67.97
13	LINOLELAIDIC ACID	0.05
14	LINOLEIC ACID	22.91
15	ARACHIDIC ACID	0.23
16	CIS-11-EICOSENOIC ACID	0.30
17	HENEICOSANOIC ACID	0.01
18	CIS-11,14-EICOSADIENOIC ACID	0.01
19	BEHENIC ACID	0.73
20	CIS-11,14,17-EICOSATRIENOIC ACID	0.01
21	ARACHIDONIC ACID	0.01
22	TRICOSANOIC ACID	0.04
23	LIGNOCERIC ACID	0.26
24	CIS-5,8,11,14,17-EICOSAPENTANOIC ACID	0.02
25	NERVONIC ACID	0.01
26	CIS,4,7,10,13,16,19 DOCOHEXAENOIC ACID	0.01
Total		100.0

## Notes

-----

-----

-----