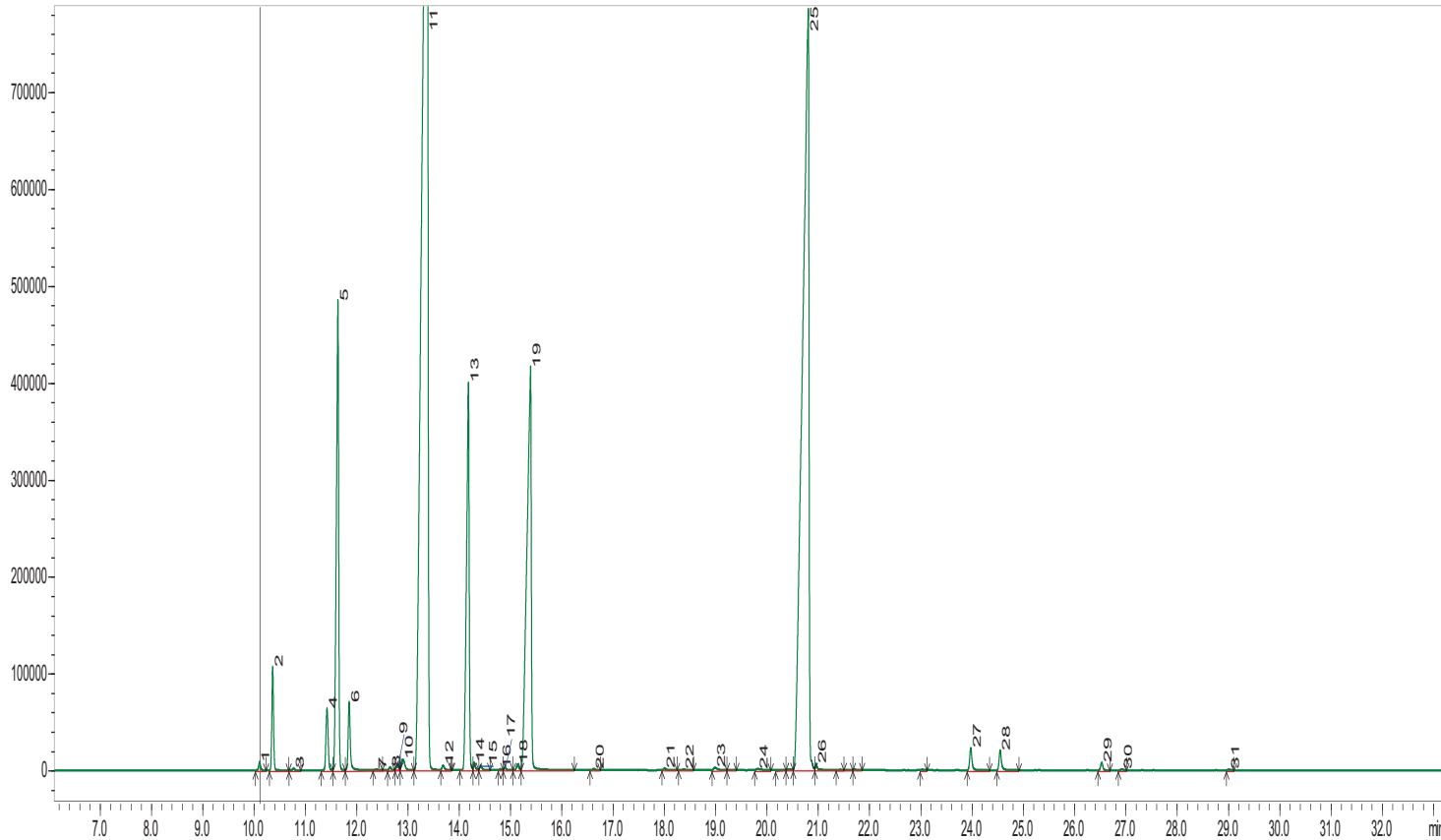


Bergamot Oil

Citrus Bergamia

Typical GC Profile



Notes

PEAK#	NAME	Area%
1	ALPHA-THUJENE	0.09
2	ALPHA-PINENE	1.09
3	CAMPHENE	0.03
4	SABINENE	0.85
5	BETA-PINENE	6.72
6	BETA-MYRCENE	0.93
7	ALPHA-PHELLANDRENE	0.02
8	DELTA-3-CARENE	0.04
9	ALPHA-TERPINE	0.05
10	P-CYMENE	0.25
11	D-LIMONENE	40.96
12	BETA-OCIMENE	0.06
13	GAMMA-TERPINENE	6.36
14	SABINENE HYDRATE	0.10
15	CIS-LINALOOL OXIDE	0.07
16	FENCHONE	0.01
17	TRANS-LINALOOL OXIDE	0.03
18	ALPHA-TERPINOLENE	0.08
19	LINALOOL	10.89
20	CAMPHOR	0.02
21	TERPINEN-4-OL	0.03
22	ALPHA-TERPINEOL	0.02
23	OCTYL ACETATE	0.01
24	NERAL	0.05
25	LINALYL ACETATE	30.23
26	GERANIAL	0.13
27	NERYL ACETATE	0.33
28	GERANYL ACETATE	0.30
29	CARYOPHYLENE	0.10
30	TRANS-ALPHA-BERGAMOTENE	0.01
31	BETA-BISABOLENE	0.01
Total		100.00