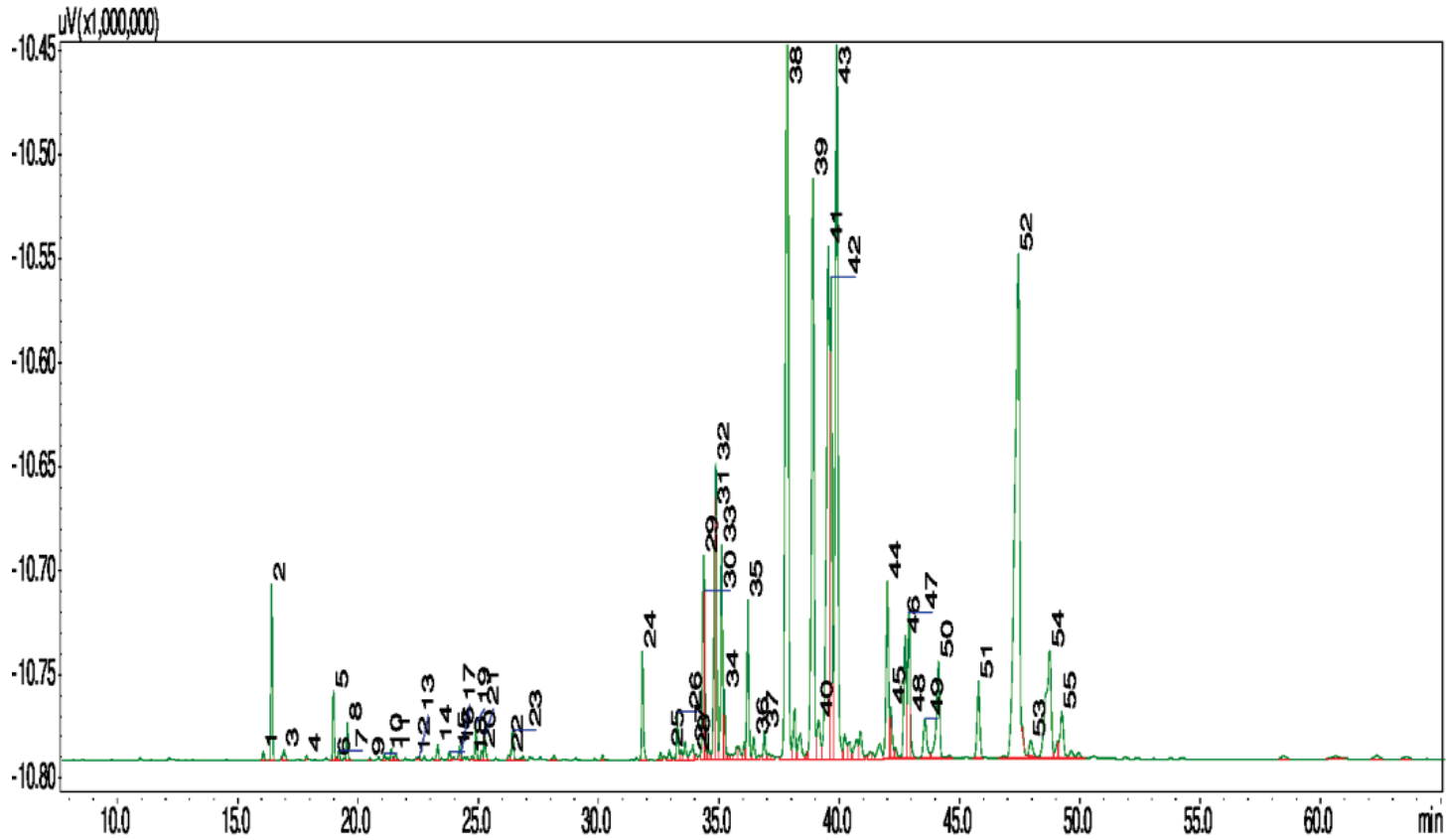


Blue Cypress Oil

Callitris zintratropica

Typical GC Profile



Notes

Peak #	Compound Name	Area %
1	ALPHA-THUJENE	0.06
2	ALPHA-PINENE	1.24
3	CAMPHENE	0.10
4	BETA-PINENE	0.03
5	DELTA-3-CARENE	0.53
6	ALPHA-TERPINENE	0.02
7	PARA-CYMENE	0.07
8	EUCALYPTOL	0.03
9	GAMMA-TERPINENE	0.02
10	ALPHA-PARA-DIMETHYL STYRENE	0.05
11	ALPHA-TERPINOLENE	0.06
12	FENCHYL ALCOHOL	0.02
13	ALPHA-CAMPHOLENIC ALDEHYDE	0.02
14	TRANS-PINOCARVEOL	0.14
15	TRANS-PINOCAMPHONE	0.08
16	BORNEOL	0.12
17	ISOPINOCAMPHONE	0.02
18	TRPINEN-4-OL	0.02
19	ALPHA-TERPINEOL	0.32
20	MYRTENAL	0.09
21	VERBENONE	0.22
22	TRANS-MYRTENOL	0.05
23	2-CARENE-10-AL	0.31
24	BETA-ELEMENE	1.01
25	BETA-CARYOYLENE	0.13
26	ALPHA-GUAIENE	0.46
27	ALHA-HUMULENE	0.25
28	ALPHA-GURJUNENE	0.05
29	MYRTENIC ACID	1.88
30	ISOLONGIFOLENE-9,10-DIHYDRO	1.41
31	GAMMA-SELINENE	1.59
32	BETA-SELINENE	2.59
33	ALPHA-SELINENE	2.27
34	DELTA-GUAIENE	2.25
35	ALPHA-ELEMOL	1.72
36	ALLOAROMADENDRENE	0.26
37	GAMMA-GURJUNEN	0.32
38	GUAIOL	14.64
39	GAMMA-EUDESOL	8.40
40	10-EPI-GAMMA-EUDESOL	0.71
41	BETA-EUDESOL	6.31
42	ALPHA-EUDESOL	5.37
43	BULNESOL	10.58
44	GAMMA-COSTOL	2.47
45	CHAMAZULENE	0.62
46	BETA-COSTOL	1.64
47	ALPHA-COSTOL	1.75
48	GUAIAZULENE	0.32
49	CALLITRIN	0.74
50	CALLITRIN ISOMER	1.74
51	CALLITRISIN ISOMER	1.14
52	DIHYDROCOLUMELLARIN	10.12
53	CALLITRISIN	0.28
54	COLUMELLARIN	1.23
55	DIHYDROCALLITRISIN	0.89