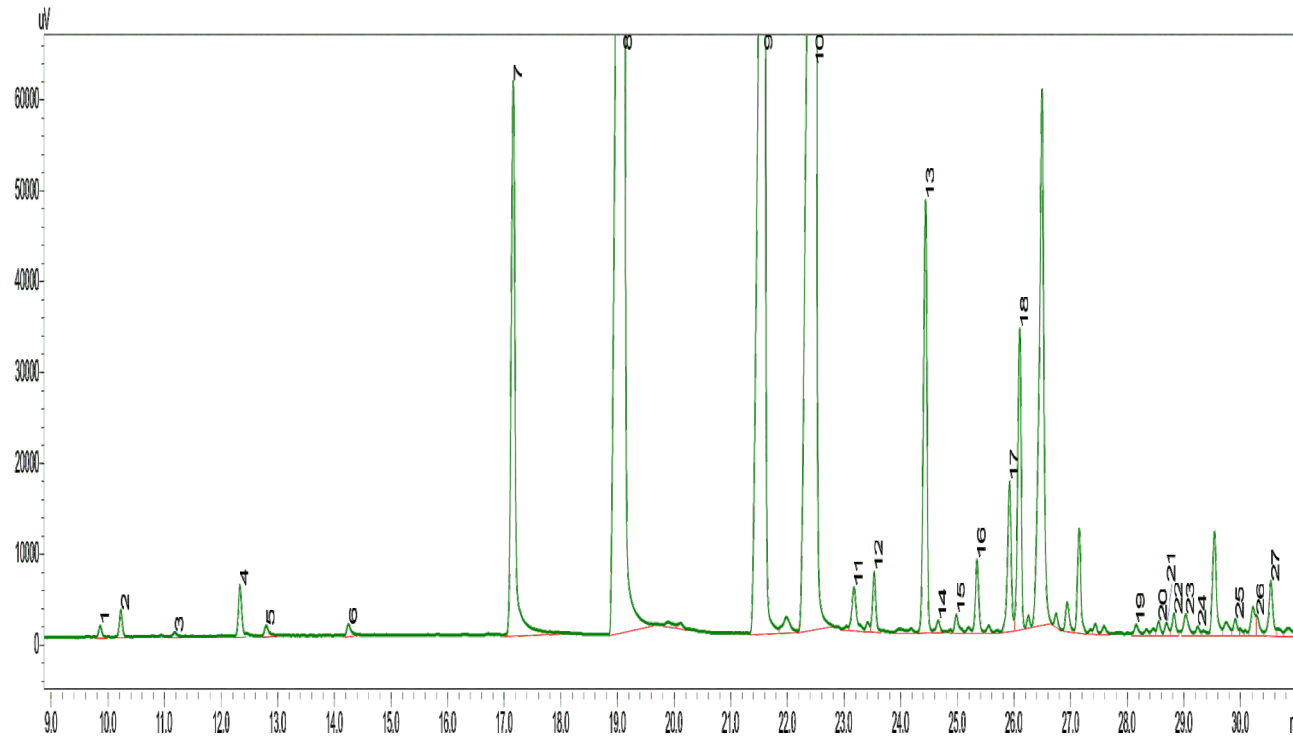


# Betel Leaf Oil

*Piper betle*

## Typical GC Profile



ID#	Name	Area%
1	ALPHA PINENE	0.08
2	CAMPHENE	0.19
3	BETA-MYRCENE	0.03
4	EUCALYPTOL	0.39
5	BETA-OCIMENE	0.09
6	BETA-LINALOOL	0.10
7	METHYL CHAVICOL	5.27
8	CHAVICOL	28.54
9	CHAVICOL ACETATE	18.38
10	EUGENOL	26.59
11	ALPHA-COPAENE	0.44
12	BETA ELEMENE	0.45
13	CARYOPHYLLENE	3.50
14	BETA-COPAENE	0.09
15	AROMADENDRENE	0.14
16	ALPHA-HUMULENE	0.55
17	GAMMA-MUROLENE	1.30
18	GERMACRENE D	2.38
19	GERMACRENE B	0.08
20	SPATHULENOL	0.10
21	CARYOPHYLLENE OXIDE	0.09
22	GLOBULOL	0.11
23	VIRIDIFLOROL	0.24
24	ROSIFOLIOL	0.06
25	EPICUBENOL	0.13
26	2-(ACETYLOXY)-4-ALLYLPHENYL ACETATE	0.93
27	AROMADENDRENE	0.14

## Notes

---



---



---