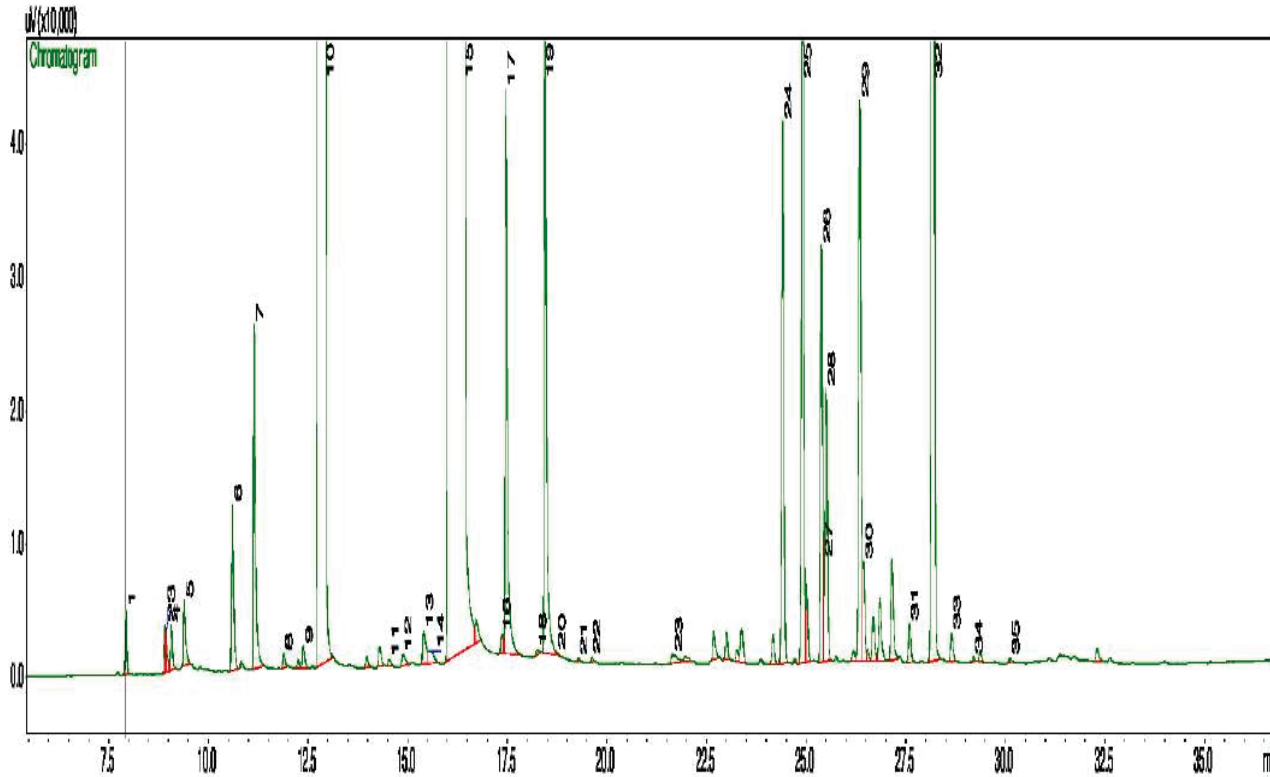


# Basil Oil

*Ocimum Basilicum*

## Typical GC Profile



Peak#	Compound Name	Area%
1	ALPHA-PINENE	0.04
2	METHYL HEPTENONE	0.03
3	SABINENE	0.02
4	BETA-PINENE	0.03
5	MYRCENE	0.06
6	LIMONENE + EUCALYPTOL	0.13
7	TRANS-BETA-OCIMENE	0.26
8	ALCOHOL C-8	0.01
9	TRANS-LINALOOL OXIDE	0.02
10	LINALOOL	17.05
11	MENTHONE	0.01
12	ISO MENTHONE	0.01
13	MENTHOL	0.04
14	CIS-3-HEXENYL BUTYRATE	0.02
15	METHYL CHAVICOL	76.40
16	NEROL	0.02
17	NERAL	0.49
18	GERANIOL	0.01
19	GERANIAL	0.59
20	MENTHYL ACETATE	0.02
21	EUGENOL	0.02
22	ALPHA-COPAENE	0.03
23	GAMA-ELEMENE	0.03
24	CARYOPHYLLENE	0.47
25	TRANS-ALPHA-BERGAMOTENE	0.61
26	TRANS-BETA-FARNESENE	0.31
27	CIS-BETA-FARNESENE	0.03
28	ALPHA-HUMULENE	0.25
29	GERMACRENE D	0.51
30	BETA-BISABOLENE	0.07
31	DELTA-CADINENE	0.03
32	ALPHA-BISABOLENE	1.94
33	TRANS-NEROLIDOL	0.02
34	CARYOPHYLLENE OXIDE	0.002
35	ALPHA-BISABOLOL	0.003

## Notes